



A Maxcess International Company

EM-8 Equipment Positioner



KEY FEATURES

The EM-8 provides a dependable way to position equipment accurately in virtually any chasing application. Designed for continuous operation, this heavy-duty, dual race rod positioner is capable of handling loads up to 1252 lbs (568 kg), with strokes from 2.0" up to 6.0" (51 mm to 152 mm). The EM-8 positioner is available with hydraulic cylinders or electromechanical actuators to ensure it will meet your system requirements.

The EM-8 can be tied into an existing system or maintained as a separate system. When used as a chasing system, the positioner ensures your equipment or device is accurately aligned and continuously follows or chases a moving web. Standard mounting surface is 10.0" x 12.0" (254 mm x 305 mm). An automated positioner centering (servo-center) option is available, as well as a variety of controller systems.

Key Features:

- Durable construction and quality design assure continuous-duty operation in any chasing application.
- Available as electromechanical or hydraulic.
- Servo-center option available; brings the positioner to midstroke automatically.
- Versatile control packages available.
- Custom designed and built to meet your specific requirements.
- Sensors, controls, and actuators are selected based on your guiding system requirements.

SPECS

General Specifications

Product Name:

EM-8 Equipment Positioner

Maximum Shiftable Load:

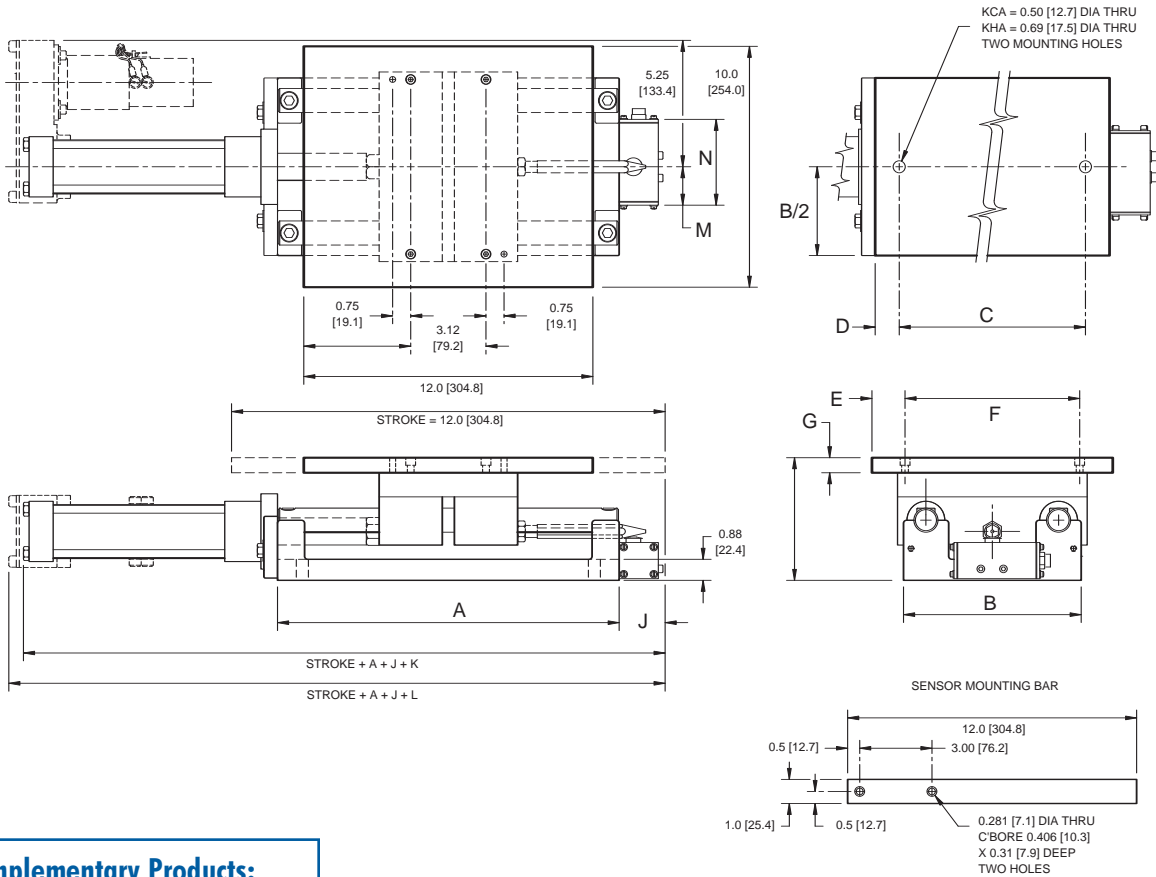
1252 lbs (568 kg) using anti-friction bearings

Stroke:

2.0" up to 6.0" (51 mm x 152 mm)

Standard Mounting Surface:

10" x 12" (254 mm x 305 mm)



Complementary Products:

FIFE

Guiding Products & Systems

- Polaris® Web Guide Controller
- Offset Pivot Guides
- Network Communication

TIDLAND

Slitting Products & Systems
Winding Products

MAGPOWR

Tension Control Products
Torque Control Products

NOTES

1. Maximum square bar length, "Z" dimension = 72" (1829 mm)
2. All dimensions in parenthesis are in millimeters
3. Sensor position and dimensions are based upon actual sensor used and customer's framework



A Maxcess International Company

Fife Corporation
222 West Memorial Road
Oklahoma City, OK 73114, USA
Phone: 405-755-1600
Fax: 405-755-8425
E-mail: fife@fife.com
Web: www.fife.com

Fife-Tidland GmbH
Fifestrasse 1, D-65779
Kelkheim/Ts., Germany
Phone: (49) 6195-7002-0
Fax: (49) 6195-7002-933
E-mail: info@maxcess.de

Maxcess Asia
300 Orchard Road, No. 15-05
Orchard Towers
Singapore 238875
Phone: (65) 6834-1998
Fax: (65) 6835-4818
E-mail: jwongmax@singnet.com.sg



MAXCESS INTERNATIONAL COMPANIES



GUIDING · INSPECTION
1-800-639-3433
(405) 755-1600



TENSION CONTROL
1-800-MAGPOWR
(405) 755-1600



SLITTING · WINDING
1-800-426-1000
(360) 834-2345