



A Maxcess  
International  
Company

# Electrohydraulic Power Units



## KEY FEATURES

**S**pecifically designed for web guiding, Electrohydraulic Power Units are ideal for use with Fife's full line of electronic sensors and signal controllers. These power units incorporate our exclusive 2-stage, high-resolution, spool-type servo valve to provide precise, proportional control regardless of material or load requirements.

Equipped with their own hydraulic reservoir, pump, filter, and relief valve, all standard models can be used for single, double, or triple guiding installations. By utilizing one or more servo valves, a single power unit simultaneously, yet independently, is capable of handling up to three separate guiding operations. For more than three, a combination of power units may be used.

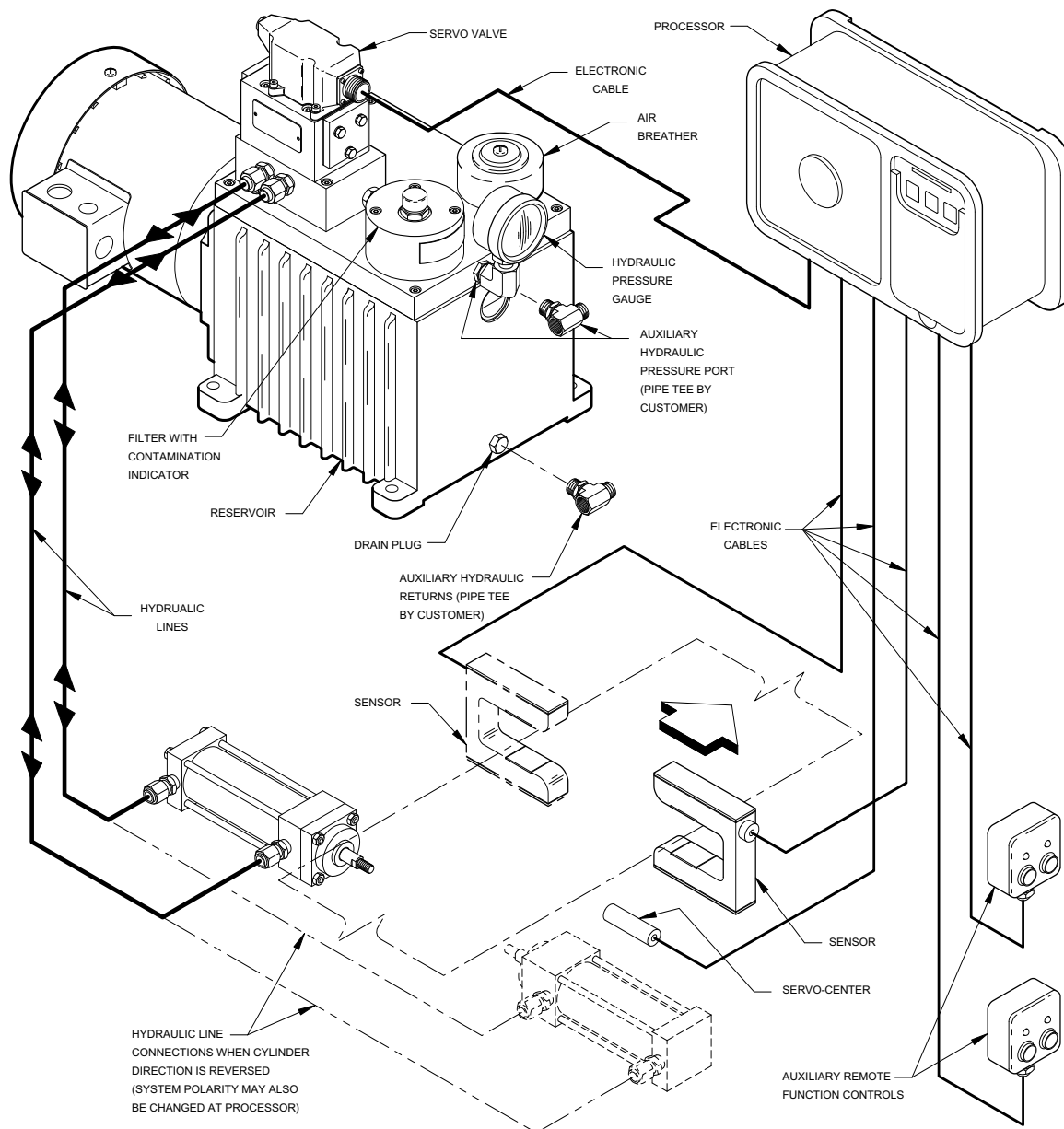
### **Key Features:**

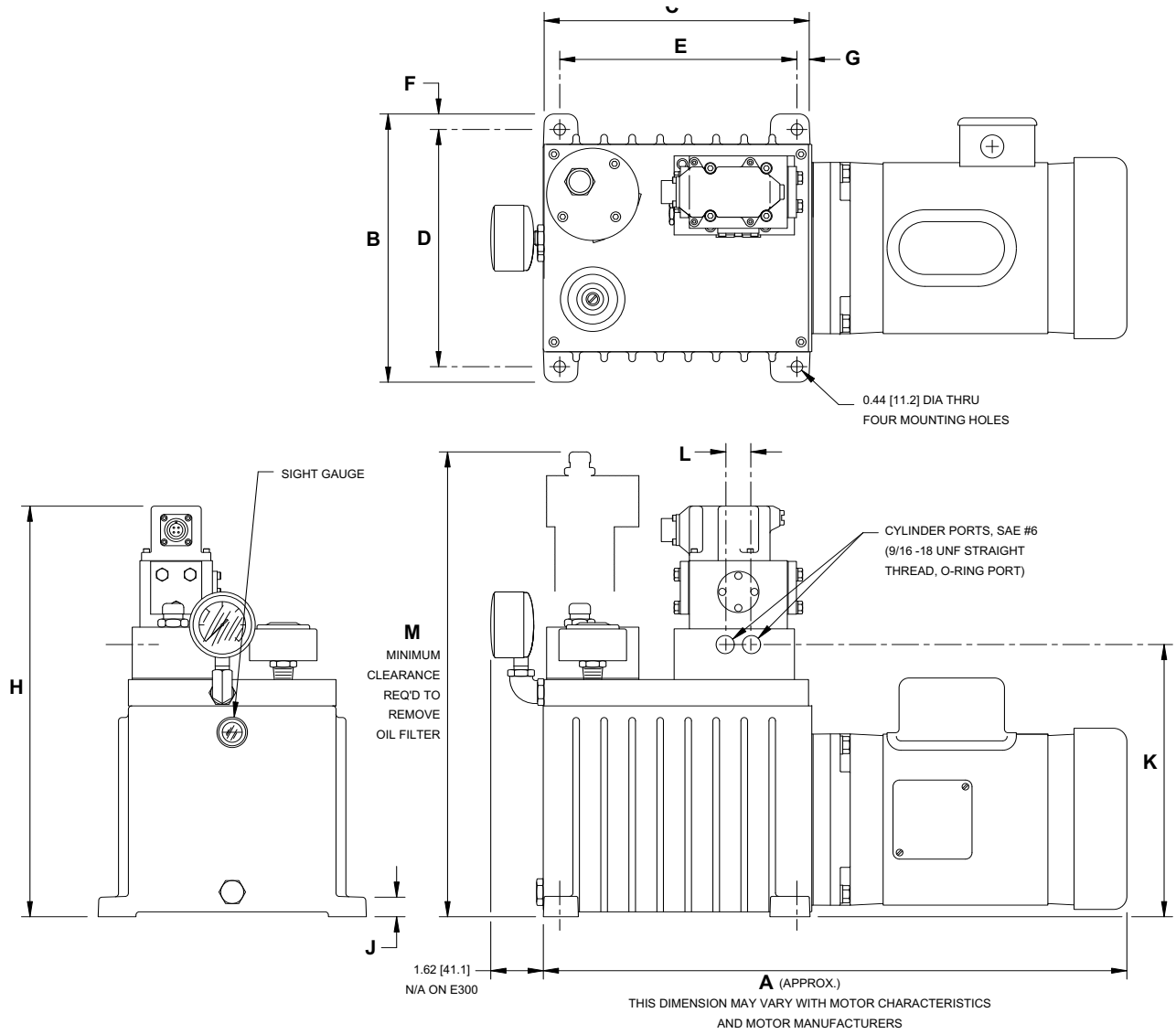
- Provides superior response and control for any web guiding application.
- Exclusive spool-type servo valve for unexcelled sensitivity and stability.
- For use with Fife electronic sensors and signal controllers.
- Compact, modular construction minimizes exterior tubing and provides maximum ease of servicing.
- Totally enclosed, or explosion proof motors are both available.
- Additional hydraulic ports are supplied on all units for use with optional Fife equipment.
- Units are furnished complete with hydraulic fittings and cables. Electrical cables are multiconductor shielded cables. They are encased in polyvinyl chloride to withstand acids, alkalis, oil, flame, moisture, solvents, and fungus.

## OPTIONS:

- All Fife power units are available with Servo-Center, Manual-Automatic, and many other circuit system options.
- Remote controls are available, and may can be incorporated into the customer's control panel.
- Optional alarm package—system will lock in place and send an alarm if the sensor does not detect the preset guide point within a selectable period of time.
- Systems can be configured to edge guide, line guide, or center guide. Dual sensor systems can edge guide from either edge or center guide. Center guides may be either fixed-sensor or moving-sensor systems.
- Floor or wall mounting brackets available.

## TYPICAL SINGLE POWER UNIT INSTALLATION





MODEL AND # OF SERVO VALVES	A	B	C	D	E	F	G	H	J	K	L	M	APPROX GROSS WEIGHT LBS (KG)
	IN (MM)	IN (MM)	IN (MM)	IN (MM)	IN (MM)	IN (MM)	IN (MM)	IN (MM)	IN (MM)	IN (MM)	IN (MM)	IN (MM)	
E25B-1	23.58 (599)	10.1 (257)	10.24 (260)	9.0 (228)	9.0 (228)	0.56 (14)	0.63 (16)	15.31 (389)	0.78 (20)	10.06 (256)	1.0 (25)	18.75 (476)	100 (45)
E50B-1	28.15 (715)	12.5 (318)	14.75 (374)	11.25 (286)	13.69 (348)	0.63 (16)	0.53 (13)	16.34 (415)	0.75 (19)	11.06 (281)	1.0 (25)	19.75 (502)	160 (73)
E50B-2	28.15 (715)	12.5 (318)	14.75 (374)	11.25 (286)	13.69 (348)	0.63 (16)	0.53 (13)	16.34 (415)	0.75 (19)	11.06 (281)	1.0 (25)	19.75 (502)	170 (77)
E100B-1	34.02 (864)	12.5 (318)	20.3 (515)	11.25 (286)	19.0 (483)	0.63 (16)	0.65 (17)	16.34 (415)	0.75 (19)	11.06 (281)	1.0 (25)	19.75 (502)	180 (82)
E300B-1	39.80 (1011)	19.0 (483)	26.06 (661)	17.5 (445)	21.12 (536)	0.75 (19)	0.81 (21)	20.96 (532)	0.50 (13)	15.68 (398)	1.0 (25)	28.67 (728)	400 (181)

## Electrohydraulic Power Unit Specifications

MODEL AND # OF SERVO VALVES	MOTOR RATING HP (KW)	RESERVOIR CAPACITY QTS (L)	HYDRAULIC PUMP GPM (L/MIN)	OPERATING PRESSURE PSI (BAR)	PRESSURE AT CYLINDER PSI (BAR)	CYLINDER THRUST AND SPEED RELATIONS							
						2IN/SEC (51MM/SEC)	1.5IN/SEC (38MM/SEC)	1IN/SEC (25MM/SEC)	0.6IN/SEC (15MM/SEC)				
E25B-1	1/4 (0.19)	7 (6.6)	0.8 (3.0)	300 (20.7)	200 (13.8)	N/A	N/A	1.5 IN. BORE 292 LBS	(38 MM BORE) (1299 N)	2 IN. BORE 471 LBS	(51 MM BORE) (2095 N)	N/A	N/A
E50B-1	1/2 (0.37)	14 (13.3)	1.6 (6.0)	325 (22.4)	215 (14.8)	2 IN. BORE 506 LBS.	(51 MM BORE) (2251 N)	N/A	N/A	2.5 IN BORE 886 OBS	(64 MM BORE) (3941 N)	3.25 IN. BORE 1464 LBS	(83 MM BORE) (6512 N)
E50B-2	1/2 (0.37)	14 (13.3)	1.6 (6.0)	325 (22.4)	215 (14.8)	N/A	N/A	1.5 IN. BORE 314 LBS	(38 MM BORE) (1397 N)	2 IN. BORE 506 LBS	(51 MM BORE) (2251 N)	2.5 IN BORE 886 LBS	(64 MM BORE) (3941 N)
E100B-1	1 (0.75)	20 (18.9)	2.3 (8.7)	525 (36.2)	350 (24.1)	N/A	N/A	2.5 IN BORE 1443 LBS	(64 MM BORE) (6419 N)	3.25 IN. BORE 2384 LBS	(83 MM BORE) (10605 N)	4 IN. BORE 3556 LBS	(102 MM BORE) (15818 N)
E300B-1	3 (2.24)	60 (56.8)	4.8 (18.2)	875 (60.3)	580 (40.0)	3.25 IN. BORE 3950 LBS.	(83 MM BORE) (17570 N)	4 IN. BORE 5893 LBS	(102 MM BORE) (26213 N)	5 IN. BORE 9570 LBS	(127 MM BORE) (42570 N)	6 IN. BORE 13550 LBS	(152 MM BORE) (60273 N)

### Complementary Products:

#### FIFE

##### Guiding Products & Systems

- POLARIS' Web Guide Controller
- Offset Pivot Guides
- Network Communication

#### TIDLAND

##### Slitting Products & Systems

##### Winding Products

#### MAGPOWR

##### Tension Control Products

##### Torque Control Products



A Maxcess International Company

#### Fife Corporation

222 West Memorial Road  
Oklahoma City, OK 73114, USA  
Phone: 405-755-1600  
Fax: 405-755-8425  
E-mail: fife@fife.com  
Web: www.fife.com

#### Maxcess Europe

Fifestrasse 1, D-65779  
Kelkheim/Ts., Germany  
Phone: (49) 6195-7002-433  
Fax: (49) 6195-7002-933  
E-mail: info@maxcess.de

#### Maxcess Asia

300 Orchard Road, No. 15-05  
Orchard Towers  
Singapore 238875  
Phone: (65) 6834-1998  
Fax: (65) 6835-4818  
E-mail: jwongmax@singnet.com.sg



MAXCESS INTERNATIONAL COMPANIES



GUIDING · INSPECTION

1-800-639-3433  
(405) 755-1600



TENSION CONTROL

1-800-MAGPOWR  
(405) 755-1600



SLITTING · WINDING

1-800-426-1000  
(360) 834-2345