



A Maxcess
International
Company

GAG-3 Electromechanical Actuator



The rugged GAG-3 provides the extra thrust you need to handle the most demanding jobs, with shiftable loads up to 2,240 lbs (1,016 Kg). The actuator utilizes a 2.0-Amp, 1,560-rpm motor to deliver enough power for any application. This gear-driven actuator also features fast shifting speeds of 0.87 in/sec (22 mm/sec), and standard actuator strokes ranging from 1 to 12 inches (25 to 305 mm) in 1-inch (25 mm) increments.

Ball screw and nut design provides low-friction, efficient operation, and eliminates the typical end of stroke sticking and/or the need for actuator limit switches. For use with Fife's CDP-01 or CSP-01 web guide controllers, this actuator is widely used for steering guides, displacement guides, positioner assemblies, slaving, chasing applications, and unwind/rewind applications.

SPECS

General Specifications

Product Name:

GAG-3 Electromechanical Actuator

Gearing Ratio: 3:1

Motor Amps: 2.0

Maximum Motor rpm: 1,560

Maximum Shiftable Load:

2,240 lbs (1,016 Kg)
(using antifriction bearings)

Maximum Design Thrust:

224 lbf (996N)

Maximum Shifting Speed:

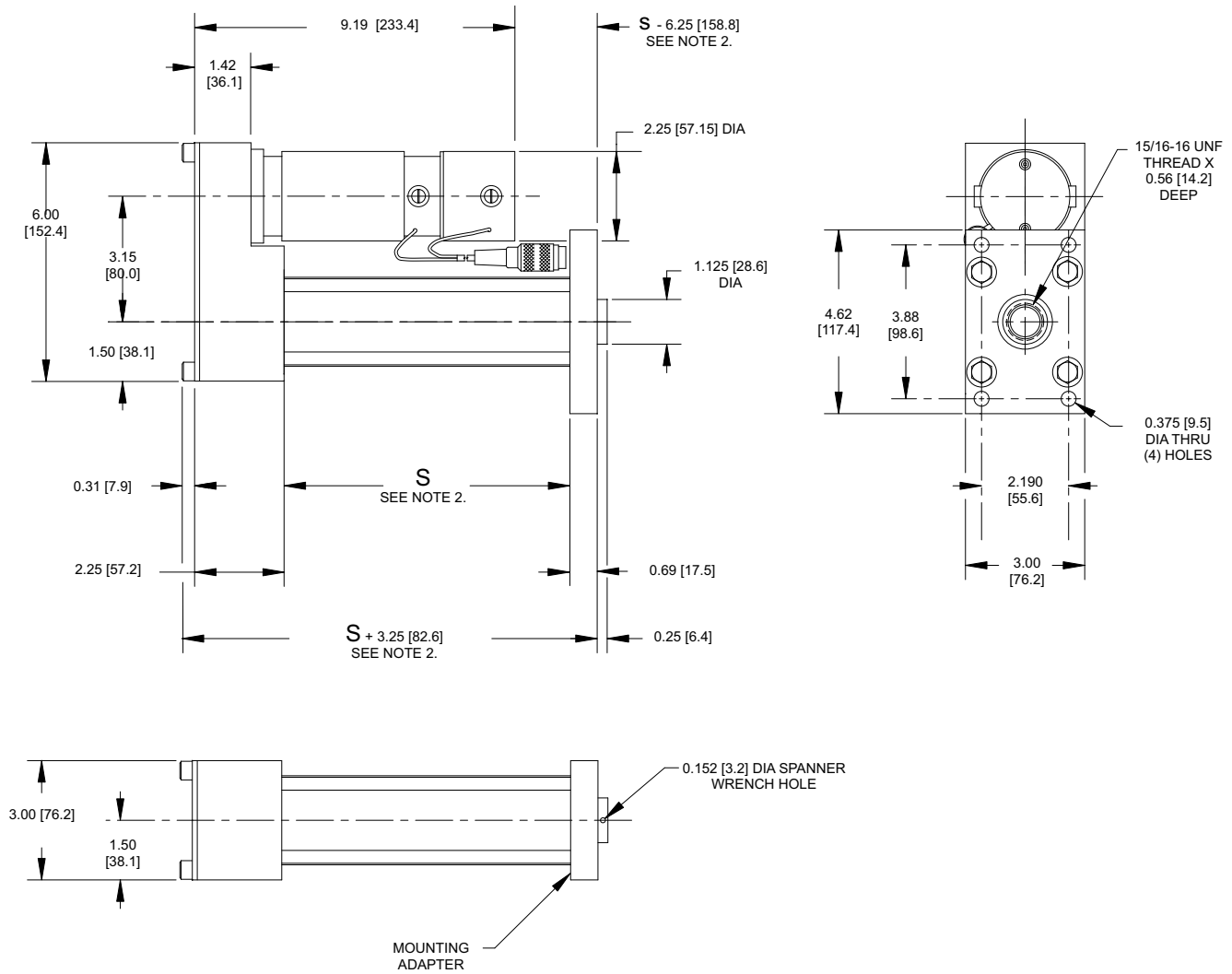
0.87 in/sec (22mm/sec)

KEY FEATURES

Key Features:

- Gear-driven actuator with shiftable loads up to 2,240 lbs (1,016 Kg).
- Clean, electronic operation.
- Durable construction for continuous-duty reliability.
- Nonsticking end of stroke design.
- No limit switches required.
- Compatible with all Fife automated guiding and positioning equipment.
- Sized and configured to your requirements.

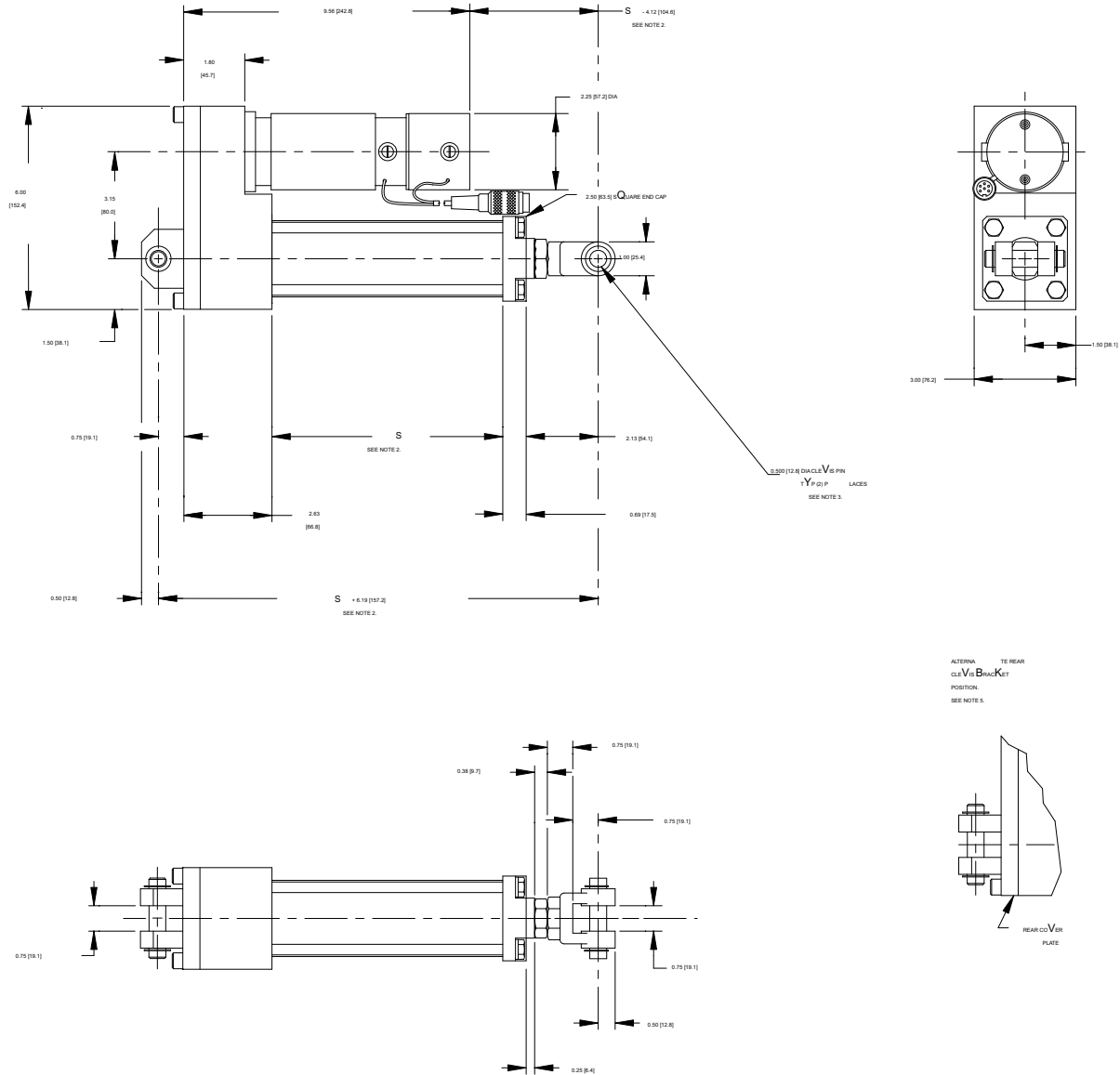
GAG-3 WITH FLANGE



NOTES:

1. This drawing shows an actuator with a rectangular flange mounting adapter.
2. Actuators with strokes $\leq 7''$ (127) $S = 8.81$ (224)
 Actuators with strokes $> 7''$ (127) $S = \text{stroke} + 1.81$ (46)
3. Rotary motion of the actuator rod will produce linear movement of the actuator. The connection to the rod must be rigid, and not free to rotate.
4. All dimensions in parenthesis are in millimeters.

GAG-3 WITH CLEVIS MOUNT



NOTES:

1. This drawing shows an actuator with a clevis adapter.
2. Actuators with strokes $\leq 5''$ (102) $S = 6.81$ (173)
 Actuators with strokes $> 5''$ (102) $S = \text{stroke} + 1.81$ (46)
3. Each actuator is supplied with two clevis pins and four cotter pins or snap rings.
4. Rotary motion of the actuator rod will produce linear movement of the actuator.
 The connection to the rod must be rigid, and not free to rotate.
5. To change the orientation of the rear clevis bracket, it is necessary to remove the rear cover plate.
6. All dimensions in parenthesis are in millimeters.

Complementary Products:

FIFE

Guiding Products & Systems

- Polaris Web Guide Controller

- KAMBEROLLER® Steering Guides

Inspection Products & Systems

TIDLAND

Slitting Products & Systems

Winding Products

MAGPOWR

Tension Control Products

Torque Control Products



A Maxcess
International
Company

Fife Corporation

222 West Memorial Road
Oklahoma City, OK 73114, USA
Phone: 405-755-1600
Fax: 405-755-8425
E-mail: fife@fife.com
Web: www.fife.com

Maxcess Europe

Fifestrasse 1, D-65779
Kelkheim/Ts., Germany
Phone: (49) 6195-7002-433
Fax: (49) 6195-7002-933
E-mail: info@maxcess.de

Maxcess Asia

300 Orchard Road, No. 15-05
Orchard Towers
Singapore 238875
Phone: (65) 6834-1998
Fax: (65) 6835-4818
E-mail: jwongmax@singnet.com.sg



MAXCESS INTERNATIONAL COMPANIES



GUIDING · INSPECTION
1-800-639-3433
(405) 755-1600



TENSION CONTROL
1-800-MAGPOWR
(405) 755-1600



SLITTING · WINDING
1-800-426-1000
(360) 834-2345