



A Maxcess
International
Company

InPrint Video Web Inspection System

The InPrint video inspection system is a unique, all-in-one web viewer, integrating the camera, control panel, and microprocessor into a single, compact, industrial grade (IP40) housing. This system delivers unmatched resolution and reliability in applications where print quality is closely monitored and press space is limited.

InPrint is easily integrated into any printing press. All cables have connection on both ends to simplify the wiring process. 24x zoom (9x optical, 2.67x digital) and advanced features allow for prompt detection of the smallest variations in print or register settings, so they can be corrected before they appear on the final product. A high performance imager maintains an optimized resolution of 800 x 600 pixels at a refresh rate of 72 Hz, delivering an image that is unmatched in sharpness and reliability.



KEY
FEATURES

SPECS

General Specifications

Power Supply:

115V - 230V / 47-63 Hz

Ambient Temperature:

+41° F to +113° F
(+5° C to +45° C)

Positioning Device (Traverse):

Standard dual mount,
max length 157.48" (4000 mm)
Cantilevered mounting,
max length 39.37" (1000 mm)

Monitor:

17" CRT monitor (19" and 21"
or LCD options available)

Camera:

Color: RGB with 30-bit color
Resolution: 800 x 600 at 72 Hz
Image Capture Rate: Up to 8
frames per second
Controls: Motorized lens con-
trols for Iris, Focus and 24x
Zoom (up to 75x enlargement)

Field of View:

Max: 3.31" x 4.41"
(84 mm x 112 mm)
Min: 0.14" x 0.18"
(3.5 mm x 4.6 mm)

Extended Field of View

Max: 6.38" x 8.50"
(162 mm x 216 mm)
Min: 0.27" x 0.35"
(6.75 mm x 9 mm)

Strobe Head:

Long-life Xenon lamp

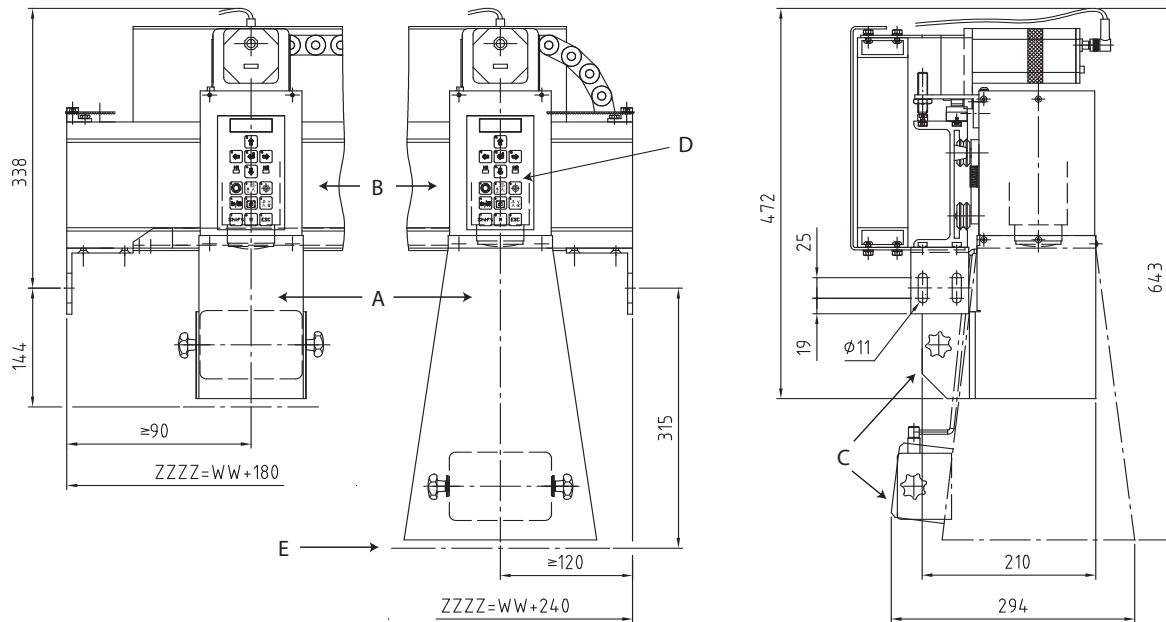
Positioning Speed:

Up to 3.461"/s (92.5 mm/s)
adjustable by 1 second steps

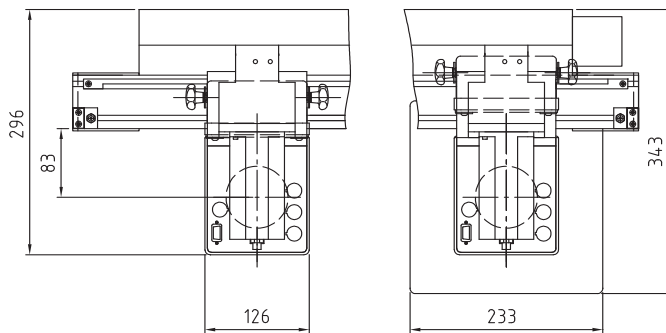
Key Features:

- Unique, all-in-one system architecture
- Superior resolution eliminates waste and improves quality
- Installs quickly, with few cables and components
- Cantilevered or fixed mounting options
- Program up to 32 positions each with independent digital zoom and exposure settings using Autoscan function and motorized track
- Gear-tooth sensor, encoder, KT-5 optical mark reader and RS-422 serial port available for easy synchronization with printing processes, gearless presses, slitter rewinders and doctor machines
- Expanded field of view doubles the inspection range width and height

Fife InPrint with Programmable Traverse



ALL DIMENSIONS ARE IN MILLIMETERS



- A** - Camera
- B** - Traverse
- C** - Strobe Lamp
- D** - Control Panel
- E** - Material Web

- WW** - Web Width
- ZZZZ** - Overall Traverse Length
- SFOV** - Standard Field of View
- EFOV** - Extended Field of View

Special Features

Splitscreen - Horizontally or vertically split any image in 4 steps up to an 8x8 'checkerboard' pattern.

Image Rotation - 0°, 90°, 180° and 270°

Image Freeze - Locks image shown on monitor

Password - For protection of setup parameters

Image Mirroring - Provides accurate comparison of target output to actual results

Motorized Track with Autoscan / Autoscroll - Continuous scanning of the whole repeat length and/or width

Programmable Modes - Digital zoom, rotation, xy position, mirroring and exposure modes can be stored for each run.

Motorized Lens - Controls for Iris, Focus and 24x Zoom (up to 75x enlargement)

Optional Features:

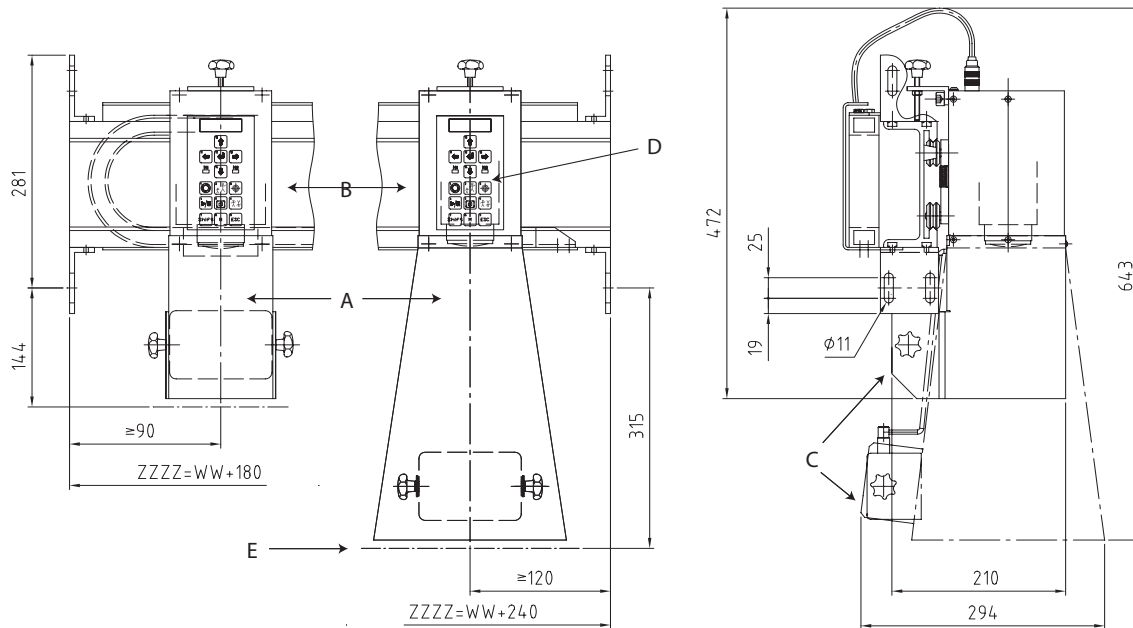
External remote control panel - Available as handheld or panel-mount unit

Back Strobe - Fixed or moveable on a traverse

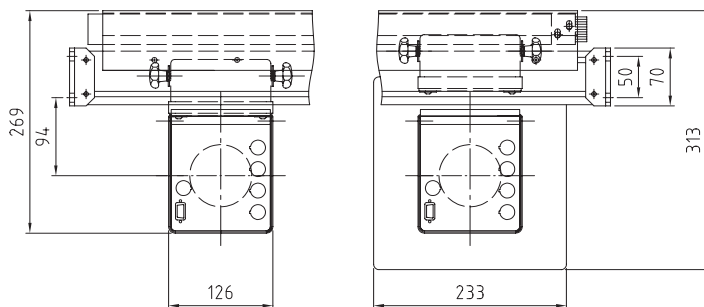
Extended Field of View

Programmable Traverse Track - Store up to 32 positions for fast, efficient setup

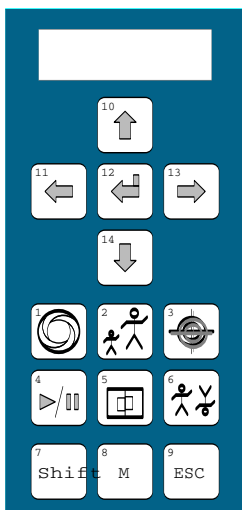
Fife InPrint with Manual Traverse



ALL DIMENSIONS ARE IN MILLIMETERS



InPrint Control Panel - Available as a handheld or panel mount unit.



1. Iris
2. Zoom
3. Set focus points / sharpness
4. Freeze
5. Split Screen
6. Rotate
7. Shift (provides recall of menu positions for favorite features)
8. Operation Mode - Manual, Auto-Scan A/B, Program Scan A/B
9. Exit Menu (dismiss changed settings)
10. Move Up
11. Move Left
12. Open Operation Menu / Confirm Changed Settings
13. Move Down
14. Move Right

Complementary Products:

FIFE

Guiding Products & Systems

- D-MAX series web guide system
- Offset Pivot Guides

TIDLAND

Slitting Products & Systems

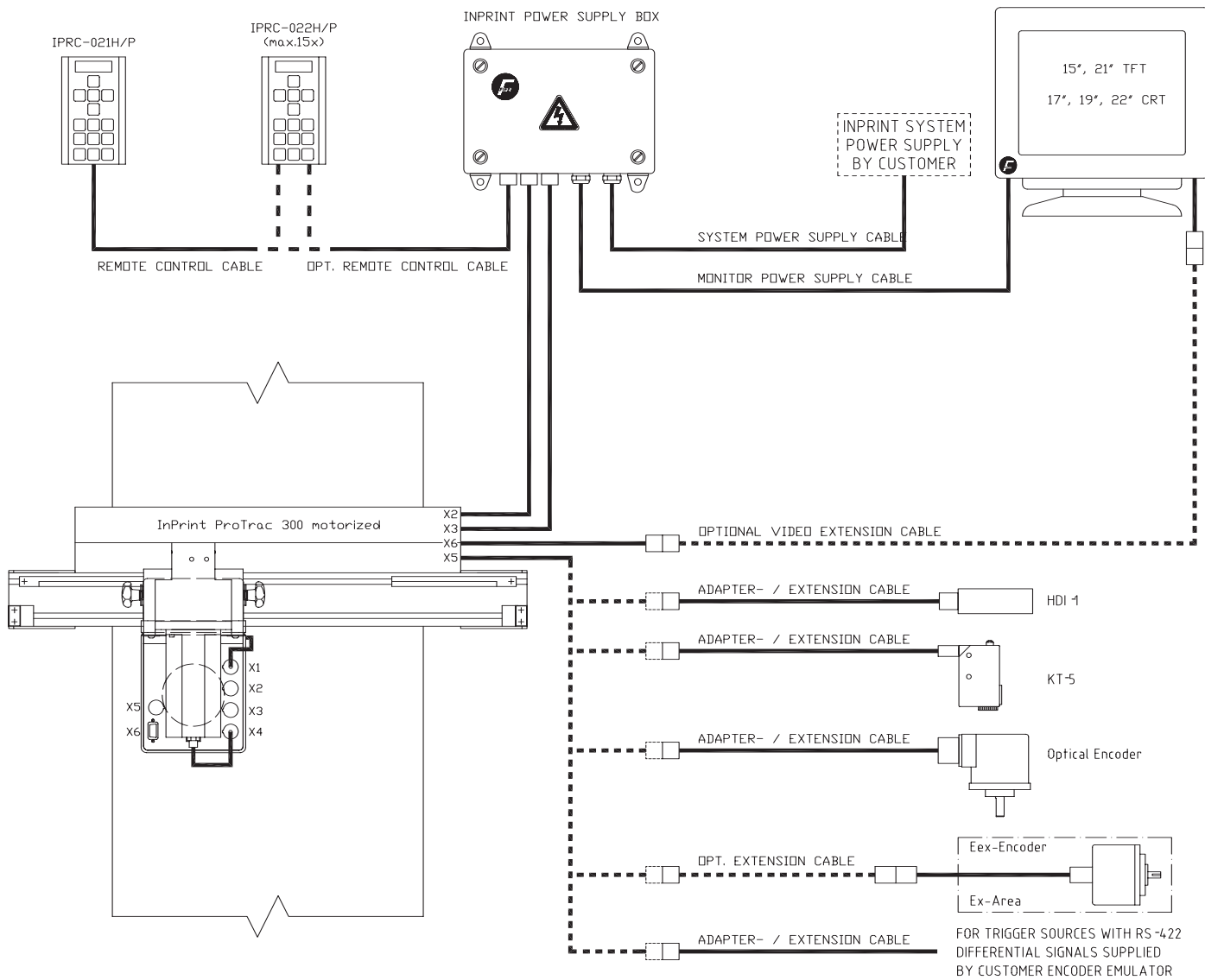
Winding Products

MAGPOWR

Tension Control Products

Torque Control Products

Applications



A Maxcess International Company

Fife Corporation

222 West Memorial Road
Oklahoma City, OK 73114, USA
Phone: 405-755-1600
Fax: 405-755-8425
E-mail: fife@fife.com
Web: www.fife.com

Maxcess Europe

Fifestrasse 1, D-65779
Kelkheim/Ts., Germany
Phone: (49) 6195-7002-433
Fax: (49) 6195-7002-933
E-mail: info@maxcess.de

Maxcess Asia

300 Orchard Road, No. 15-05
Orchard Towers
Singapore 238875
Phone: (65) 6834-1998
Fax: (65) 6835-4818
E-mail: asia@maxcessintl.com



MAXCESS INTERNATIONAL COMPANIES



GUIDING · INSPECTION

1-800-639-3433
(405) 755-1600



TENSION CONTROL

1-800-MAGPOWR
(405) 755-1600



SLITTING · WINDING

1-800-426-1000
(360) 834-2345