



A Maxcess
International
Company

Kantiroller Steering Guide

MOTOR AND
SERVO-CEN
T CABLES



KEY FEATURES

Kantiroller Steering Guides provide web position correction by bending the web through a long entering span. These innovative guiding assemblies provide immediate lateral correction for transient errors, while at the same time compensating for the web's steady state errors.

Powered either with an electromechanical actuator or hydraulic cylinder, Kantiroller Steering Guides are built durable for high-load capacity. Features include a single cast base, hardened raceroD supports, and low-friction ball bushings. All guides are available with either single or double rollers.

Key Features:

- Unique design provides web position correction by bending web through long entering span.
- Ideal for applications such as collator and label press.
- Electromechanical or hydraulic system operation.
- Fast, accurate web positioning for web widths up to 14.0" (356 mm).
- Low-friction ball bushings and race rod supports.
- Durable construction for low maintenance and long-lasting reliability.
- Compatible with all standard Fife sensors and controllers.
- Sensor selection is based on web material and system requirements.
- Optional Servo-Center available to speed setup and threading.
- Wide selection of mounting brackets, stands, sensors, and controllers available to ensure quick and easy installation.
- Custom designs are available upon request.

SPECS

General Specifications

Product Name:
Kantiroller Steering Guide

Load Capacity:
Up to 75 lbf (334 N)

Roller Face:
6.30 to 16"
(160 to 406 mm)

Kantiroller Selection and Sizing Chart

MODEL	GUIDE CORRECTION lbs (mm)	NUMBER OF ROLLERS	ROLLER in (mm)		MAXIMUM TENSION lbs (N)	ENTRY SPAN in (mm)	
			MAX. DIAMETER	MAX. FACE LENGTH		MINIMUM	MAXIMUM
SYMAT 25	0.89 (23)	1	2.0 (51)	6.30 (160) 7.88 (200) 9.84 (250)	45 (200)	11.00 (279)	24.0 (610)
		2		9.84 (250)			
KLB-R1/L1	1.5 (38)	1	4.0 (102)	11.00 (279)	30 (133)	27.0 (686)	60.0 (1524)
KLB-R2/L2	1.5 (38)	2	2.25 (57)	11.00 (279)	30 (133)	27.0 (686)	60.0 (1524)
KA-R1/L1	1.5 (38)	1	5.0 (127)	16.00 (406)	75 (334)	27.0 (686)	60.0 (1524)
KA-R2/L2	1.5 (38)	2	3.0 (76)	16.00 (406)	75 (334)	27.0 (686)	60.0 (1524)

NOTES:

1. Model Nomenclature:

R1 and R2 are right hand versions (actuator is on right side when looking downstream) with one roller or two rollers, respectively.

L1 and L2 are left hand versions (actuator is on left side when looking downstream) with one roller or two rollers, respectively.

2. All information displayed in the chart above is approximate.

3. Fife will verify Kantiroller guide type and size for each application.

4. Additional wrap styles available are illustrated on the last page of this product sheet.

5. All dimensions in parenthesis are millimeters

- **Symat-25 Kantiroller** – Designed for narrow web applications with widths less than 8.0" (203 mm), entry spans less than 30.0" (762 mm), and tensions less than 30 lbf (133 N).
- **KLB Kantiroller** – Designed for applications with web widths up to 8" (203 mm), entry spans less than 60.0" (1,524 mm), and tensions to 45 lbf (200 N).
- **KA Kantiroller** – Designed for applications with web widths up to 14.0" (356 mm), entry spans less than 60.0" (1,524 mm) and tensions to 75 lbf (334 N).

Complementary Products:

FIFE

Guiding Products & Systems
 - SE-26 Line Guide Sensor
 - Offset Pivot Guides
 - KAMBEROLLER® Guides
 Inspection Products & Systems

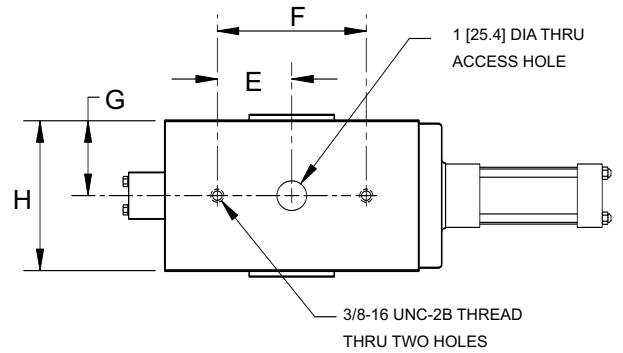
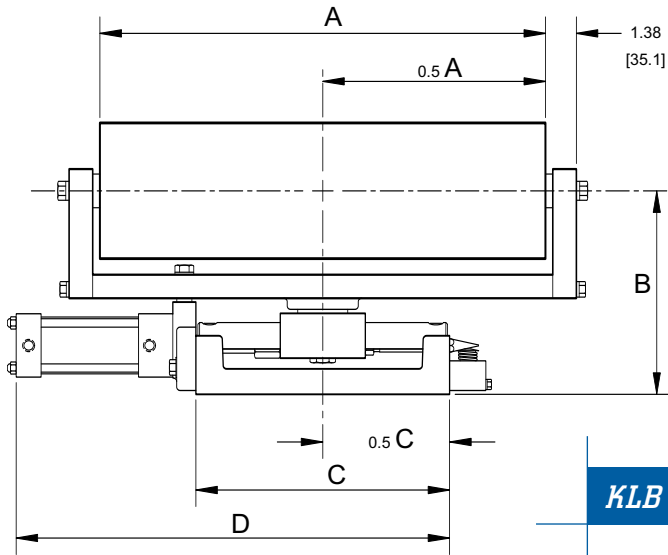
TIDLAND

Slitting Products & Systems
 Winding Products

MAGPOWR

Tension Control Products
 Torque Control Products

KLB AND KA KANTIROLLER

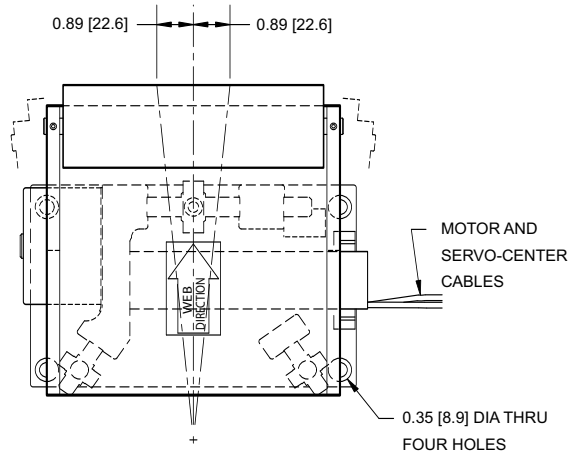


VIEW FROM BOTTOM OF RACEWAY BASE

KLB AND KA KANTIROLLER DIMENSION CHART

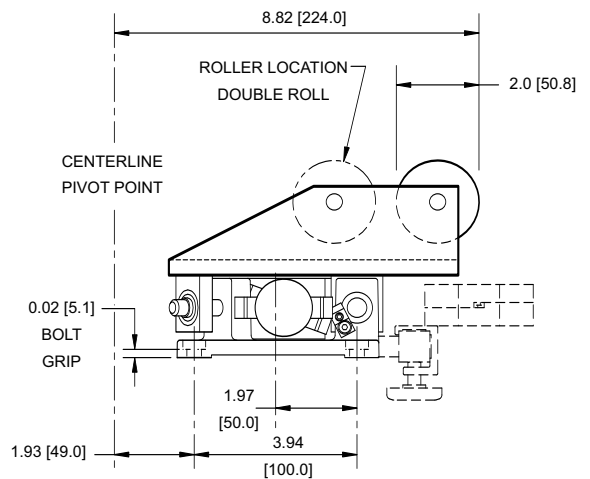
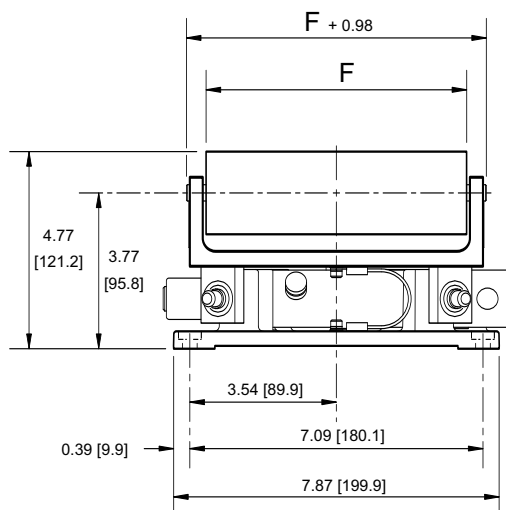
RACEWAY MODEL	NUMBER OF ROLLERS	DIAMETER OF ROLLERS	A	B	C	D	E	F	G	H
KLB-R AND-L	1	4.0 (102)	11 (279)	6.63 (168)	6.50 (165)	14.38 (365)	2.0 (51)	4.0 (102)	1.81 (46)	3.63 (92)
	2	2.25 (57)		5.75 (146)						
KA-R AND-L	1	5.0 (127)	16 (406)	7.50 (191)	8.16 (207)	15.75 (400)	2.50 (64)	5.0 (127)	2.69 (68)	5.38 (137)
	2	3.0 (76)		6.50 (165)						

SYMAT25 KANTIROLLER

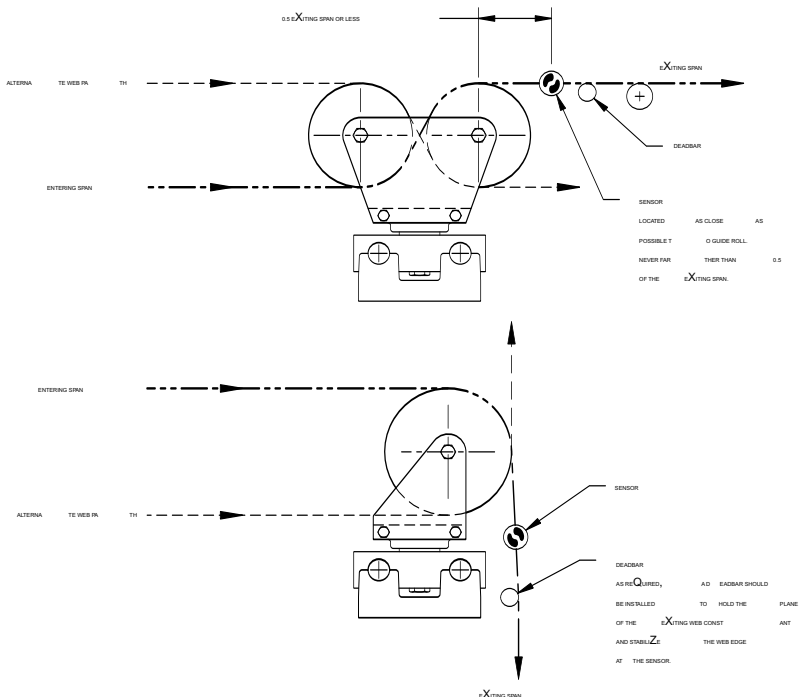


SYMAT 25 KANTIROLLER Notes:

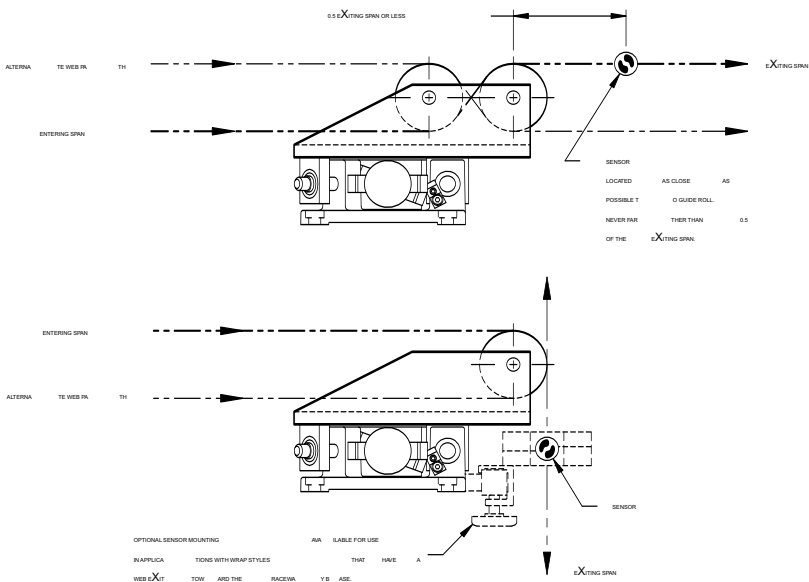
1. Dimensions shown in parenthesis are in millimeters.
2. Optional sensor mounting bar is available for use with some sensors for applications with web wrap style exiting toward the raceway base.
3. $F = 6.30''$ (160 mm), $7.88''$ (200 mm), OR $9.84''$ (250 mm)



KLB AND KA KANTIROLLER STEERING GUIDE



SYMAT25 KANTIROLLER STEERING GUIDE



A Maxcess International Company

Fife Corporation
 222 West Memorial Road
 Oklahoma City, OK 73114, USA
 Phone: 405-755-1600
 Fax: 405-755-8425
 E-mail: fife@fife.com
 Web: www.fife.com

Maxcess Europe
 Fifestrasse 1, D-65779
 Kelkheim/Ts., Germany
 Phone: (49) 6195-7002-433
 Fax: (49) 6195-7002-933
 E-mail: info@maxcess.de

Maxcess Asia
 300 Orchard Road, No. 15-05
 Orchard Towers
 Singapore 238875
 Phone: (65) 6834-1998
 Fax: (65) 6835-4818
 E-mail: jvongmax@singnet.com.sg



MAXCESS INTERNATIONAL COMPANIES



GUIDING · INSPECTION
 1-800-639-3433
 (405) 755-1600



TENSION CONTROL
 1-800-MAGPOWR
 (405) 755-1600



SLITTING · WINDING
 1-800-426-1000
 (360) 834-2345