



A Maxcess
International
Company

LAB-10 Electromechanical Actuator



KEY
FEATURES

The LAB-10 offers a variety of gear ratios to meet the needs of most applications. This rugged, high-thrust actuator provides shiftable loads from 4,400 to 8,400 lbs (1,996 to 3,810 Kg), at speeds from 0.95 to 0.55"/sec (23 to 14mm/sec). Standard actuator strokes range from 1 to 10" in 1" increments

Ball screw and nut design provides low-friction, efficient operation, and eliminates the typical end of stroke sticking and/or the need for actuator limit switches. For use with Fife's CDP-01 or CSP-01 web guide controllers, this versatile actuator is widely used for steering guides, displacement guides, and unwind/rewind applications.

SPECS

General Specifications

Product Name:

LAB-10 Electromechanical Actuator

Gearing Ratio:

5:1, 7:1 and 9:1

Motor Amps: 2.6

Maximum Design Thrust:

440 to 840 lbf
(1,957 to 3,736 N)

Maximum Shifting Speed:

0.95 to 0.55"/sec
(23 to 14 mm/sec)

Maximum Shiftable Load:

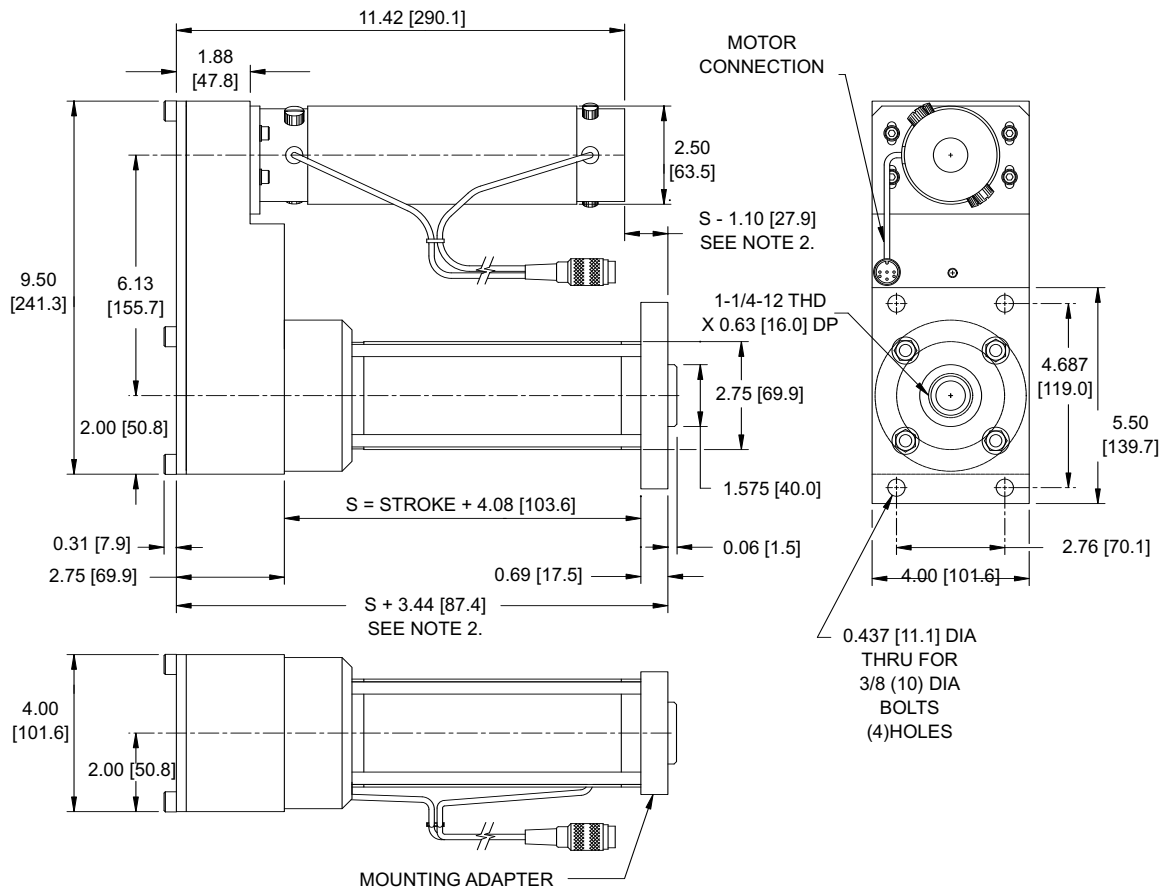
4,400 to 8,400 lbs (1,996 to 3,810 Kg) (using anti-friction bearings)

MOTOR CONNECTION

Key Features:

- Flexible actuator provides a variety of gear ratios: 5:1, 7:1 and 9:1.
- Fast, accurate operation —shifting speeds to 0.55"/sec (14mm/sec).
- Efficient two belt drive, with shiftable loads up to 8,400 lbs (3,810 Kg).
- Clean, electronic operation.
- Durable construction for continuous-duty reliability.
- Non-sticking end of stroke design.
- No limit switches required.
- Compatible with all Fife automated guiding and positioning equipment.
- Sized and configured to your requirements.

LAB-10 WITH FLANGE



LAB-10- * - * - J

ACTUATOR STROKE
GEAR RATIO

NOTES:

1. This drawing shows an actuator with a rectangular flange mounting adapter.
2. Actuators with strokes $\leq 5''$ (127) $S = 9.08$ (231)
Actuators with strokes $> 5''$ (127) $S = \text{stroke} + 4.08$ (104).
3. Rotary motion of the actuator rod will produce linear movement of the actuator.
The connection to the rod must be rigid, and not free to turn.
4. All dimensions in parenthesis are in millimeters.

General Specifications

MODEL	GEAR RATIO	MOTOR AMPS	* MAX SHIFTABLE LOAD lbs (kg)	MAX DESIGN THRUST lbf (N)	MAX SHIFTING SPEED in/sec (mm/sec)
LAB-10-5	5:1	2.6	*4,400 (1,996)	440 (1,957)	0.95 (23)
LAB-10-7	7:1	2.6	*6,400 (2,903)	640 (2,847)	0.70 (17)
LAB-10-9	9:1	2.6	*8,400 (3,810)	840 (3,736)	0.55 (14)

NOTES:

1. All dimensions in parenthesis are in millimeters.
2. Items marked with an asterisk * are based on using anti-friction bearings.

Complementary Products:

FIFE

Guiding Products & Systems
 - CDP-01 Web Guide Controller
 - SE-34 Lazer*Wide Sensor
 Inspection Products & Systems

TIDLAND

Slitting Products & Systems
 Winding Products

MAGPOWR

Tension Control Products
 Torque Control Products



A Maxcess
International
Company

Fife Corporation
 222 West Memorial Road
 Oklahoma City, OK 73114, USA
 Phone: 405-755-1600
 Fax: 405-755-8425
 E-mail: fife@fife.com
 Web: www.fife.com

Maxcess Europe
 Fifestrasse 1, D-65779
 Kelkheim/Ts., Germany
 Phone: (49) 6195-7002-433
 Fax: (49) 6195-7002-933
 E-mail: info@maxcess.de

Maxcess Asia
 300 Orchard Road, No. 15-05
 Orchard Towers
 Singapore 238875
 Phone: (65) 6834-1998
 Fax: (65) 6835-4818
 E-mail: jwongmax@singnet.com.sg



MAXCESS INTERNATIONAL COMPANIES



GUIDING · INSPECTION
 1-800-639-3433
 (405) 755-1600



TENSION CONTROL
 1-800-MAGPOWR
 (405) 755-1600



SLITTING · WINDING
 1-800-426-1000
 (360) 834-2345