



A Maxcess
International
Company

LRC Offset Pivot Guide



KEY
FEATURES

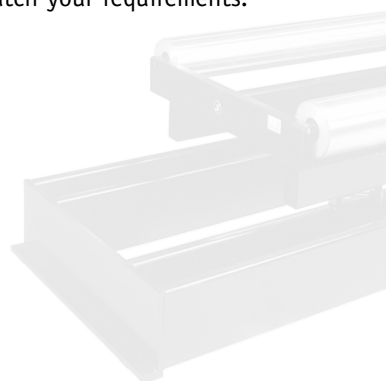
Strong and versatile, the LRC is one of our largest offset pivot guides.

Available with hydraulic cylinders or electromechanical actuators, this dependable guide can accommodate web widths up to 122" (3,100 mm), and tensions up to 900 lbf (4,003N).

Low-friction ball bushings and precision race rod supports provide low-maintenance operation for edge, line, or center guiding applications. Standard guides are equipped with a mounting base for mounting either inside your framework (Type 40) or on top (Type 50) with mounting dimensions designed to match your requirements.

Key Features:

- Accommodates web widths up to 122" (3,100 mm).
- Electromechanical or hydraulic system operation.
- Fast, accurate web positioning.
- Low-friction ball bushings and race rod supports.
- Durable construction for low maintenance and long-lasting reliability.
- Accommodates all threading styles.
- Optional Servo-Center available to speed setup and threading.
- All standard Fife sensors and controllers can be used for edge, center, or line guiding.
- Many construction and roller options available, including hazardous or other environment protection.
- Optional mounting brackets and stands are available.
- Custom designs are available upon request.



SPECS

General Specifications

Product Name:

LRC Offset Pivot Guide

Guide Span:

24 to 126" (610 to 3,200 mm)

Roller Face:

24 to 126" (610 to 3,200 mm)

Roller Diameter:

3 to 12.0"
(76 to 305 mm)

Maximum Correction:

±6.4" (163 mm)

Load Capacity:

Up to 900 lbf (4,003 N)

Complementary Products:

FIFE

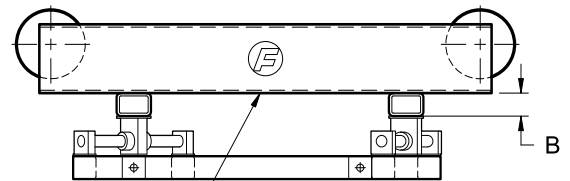
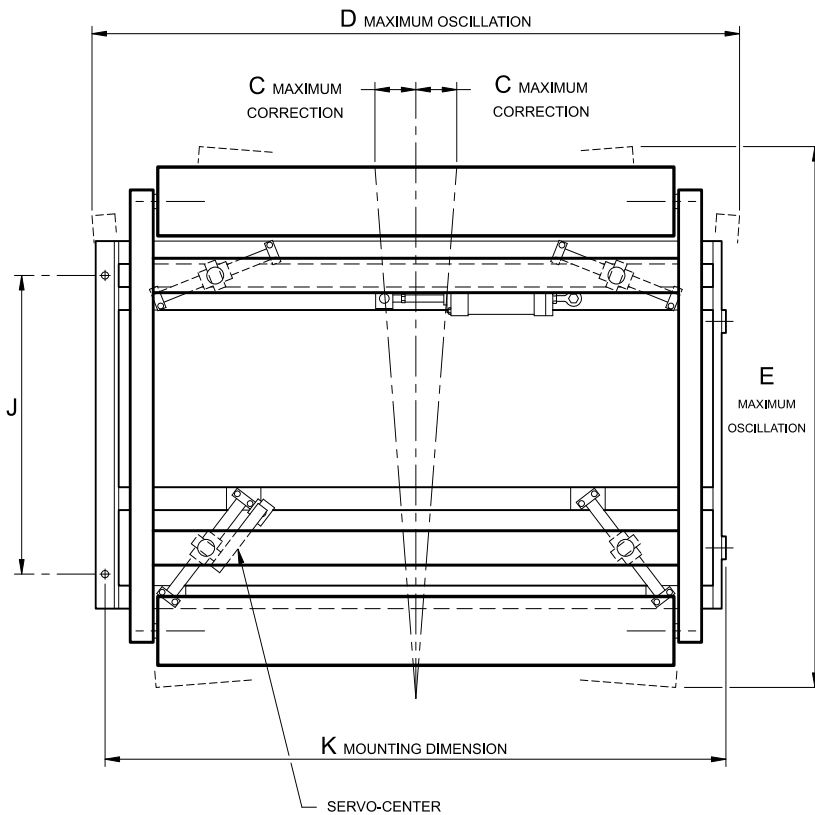
Guiding Products & Systems
 - CDP-01 Web Guide Controller
 - Network Communication
 Inspection Products & Systems

TIDLAND

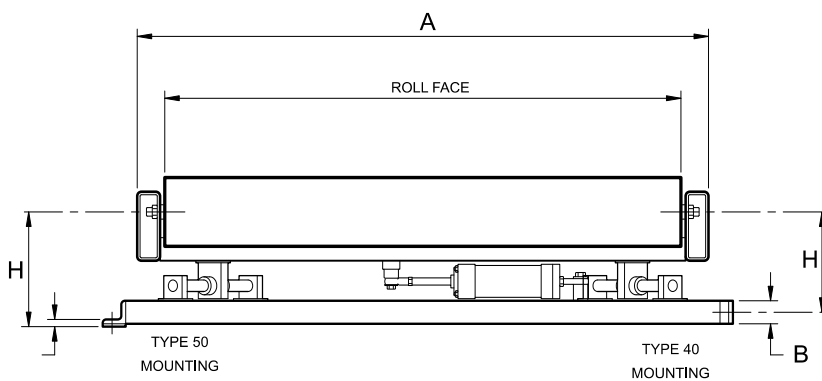
Slitting Products & Systems
 Winding Products

MAGPOWR

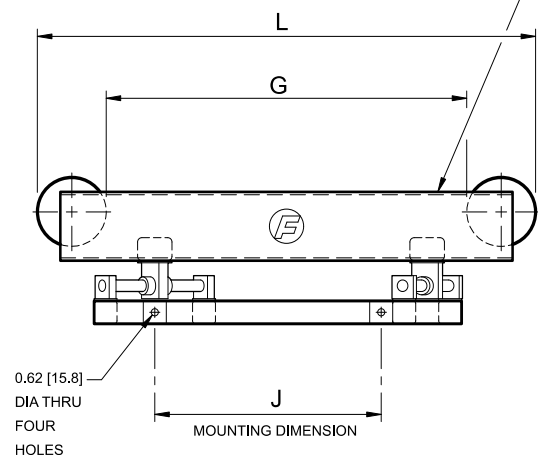
Tension Control Products
 Torque Control Products



PIVOT CARRIER FOR
 WRAP STYLES 1, 6, 9,
 AND 13 WITH A "G"
 DIMENSION GREATER
 THAN 16.0 [406.4]



PIVOT CARRIER FOR
 WRAP STYLES:
 2, 3, 4, 5, 7, 8, 10, 11, 12,
 14, 15, AND 16; AND
 FOR GUIDES WITH A
 "G" DIMENSION LESS
 THAN 16.0 [406.4]



NOTES:

1. Optional sensor mounting is available.
2. All dimensions in parenthesis are in millimeters unless otherwise specified.
3. Refer to the information and table on the next page for dimension specifications.
4. A wrap style diagram is provided on the last page of this product sheet.

Figure 1 *LRC Model Specifications*

AVAILABLE ROLL FACE:	24 through 126" (610 through 3200 mm)
L DIMENSIONS AVAILABLE	24 through 126" (610 through 3200 mm)
AVAILABLE ROLL DIAMETERS	3 through 12" (76 through 305 mm)
APPROXIMATE MAXIMUM CORRECTION	+/- 6.4" (163 mm)
ACTUATOR TYPES AVAILABLE	Electromechanical: Stroke: 1.5, 2, 3, 5, 6, 7, 9, and 12" (38, 51, 76, 102, 127, 152, 178, 229, 305 mm) Hydraulic Cylinder: Stroke: 1.5, 2, 3, 5, 6, 7, 9, and 12" (38, 51, 76, 102, 127, 152, 178, 229, 305 mm) Bore: 1.5, 2, and 2.5"* (31, 51, 64 mm)
GUIDE/ACTUATOR RATIO	Total correction / Actuator stroke is approximately 1.3" - (0.002 x "L" Dimension)
MAXIMUM CORRECTION SPEED	Actuator Speed x Guide/Actuator Ratio
MAXIMUM OPERATING TEMPERATURE	Electromechanical = 125° F (52° C) Hydraulic Cylinder = 185° F (85° C)
*The P25 Power Unit provides sufficient thrust for all load conditions	

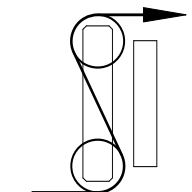
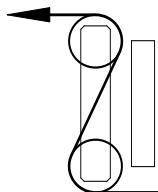
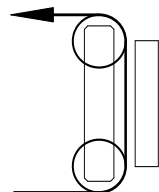
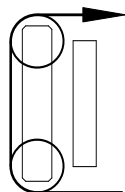
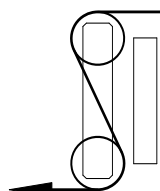
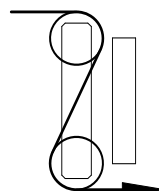
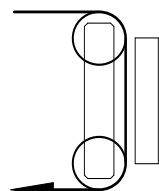
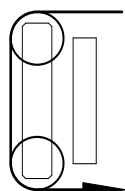
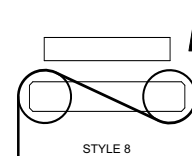
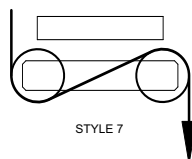
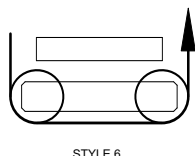
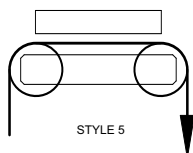
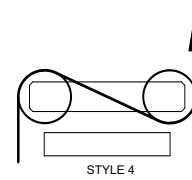
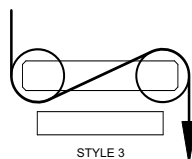
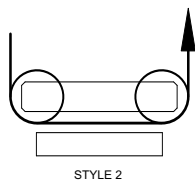
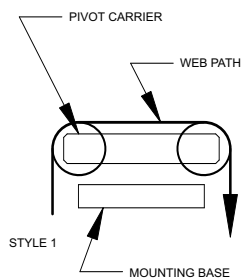
Figure 2 *LRC Model Dimensions*

A	Roller Face Length + 4.5"	
B	2, 4, or 6" (51, 102, or 152 mm)	
C	Maximum Correction (+/-)	
D	A + 2C	
E	L + A(%)	
G*	L-Roller Diameter	
H**	Type 40 Mounting	Type 50 Mounting
FOR WRAP STYLES 1, 6, 9, 13	Approximately the greater of: 0.5B + 0.5 Roller Diameter + 2.5" or 1.5B - 0.5 Roller Diameter + 4.5"	Approximately the greater of: B + 0.5 Roller Diameter + 2.75" or 2B - 0.5 Roller Diameter + 4.75"
ALL OTHER WRAP STYLES	Approximately 1.5B + 0.5 Roller Diameter + 4.5"	Approximately 2B + 0.5 Roller Diameter + 4.75"
J	To be determined by Fife Systems Engineering or Selected by Fife Systems Engineering	To be determined by Fife Systems Engineering or Selected by Fife Systems Engineering
K	Specified by customer or Fife Systems Engineering	Specified by customer or Fife Systems Engineering
L	Determined by correction required and space available (refer to above for restrictions)	Determined by correction required and space available (refer to above for restrictions)

* Guides with a "G" dimension less than 16" (406 mm) will be supplied with a pivot carrier as noted on previous page of this product sheet.

** Dimension "H" may increase by as much as 1.0" (25 mm) on large, heavily loaded guides.

OFFSET PIVOT GUIDE WRAP STYLES



A Maxcess International Company

Fife Corporation
222 West Memorial Road
Oklahoma City, OK 73114, USA
Phone: 405-755-1600
Fax: 405-755-8425
E-mail: fife@fife.com
Web: www.fife.com

Maxcess Europe
Fifestrasse 1, D-65779
Kelkheim/Ts., Germany
Phone: (49) 6195-7002-433
Fax: (49) 6195-7002-933
E-mail: info@maxcess.de

Maxcess Asia
300 Orchard Road, No. 15-05
Orchard Towers
Singapore 238875
Phone: (65) 6834-1998
Fax: (65) 6835-4818
E-mail: jwongmax@singnet.com.sg



MAXCESS INTERNATIONAL COMPANIES



GUIDING · INSPECTION
1-800-639-3433
(405) 755-1600



TENSION CONTROL
1-800-MAGPOWR
(405) 755-1600



SLITTING · WINDING
1-800-426-1000
(360) 834-2345