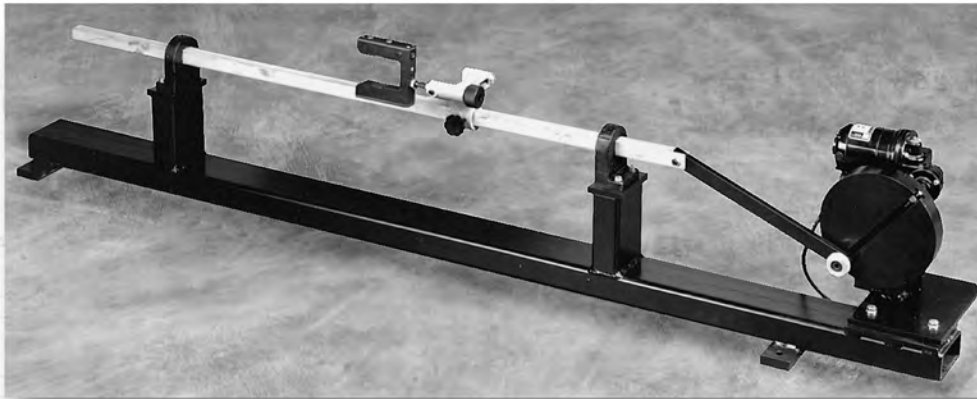




A Maxcess
International
Company

M-23 Sensor Oscillator

ROLLER
FOOT
ABLE AND
6-FOOT (1.8-METER)
POWER CORD



KEY
FEATURES

Designed for continuous-duty operation, the M-23 provides infinite adjustment of oscillation magnitude, with both speed and distance at your control. With precise speed control and oscillations from 0.0" to ± 4.0 " (102 mm), the M-23 is often used to wind uniform staggered rolls, avoiding rippled material and telescoping rolls.

Supplied as a self-contained unit, the M-23 is also available as a retrofit/upgrade for older hydraulic systems. It is easily added to existing winding installations, and comes complete with controller and cables. The cable between controller and motor measures 10 feet (3 meters) in length, and the power cord is 6 feet (1.8 meter) long.

SPECS

General Specifications

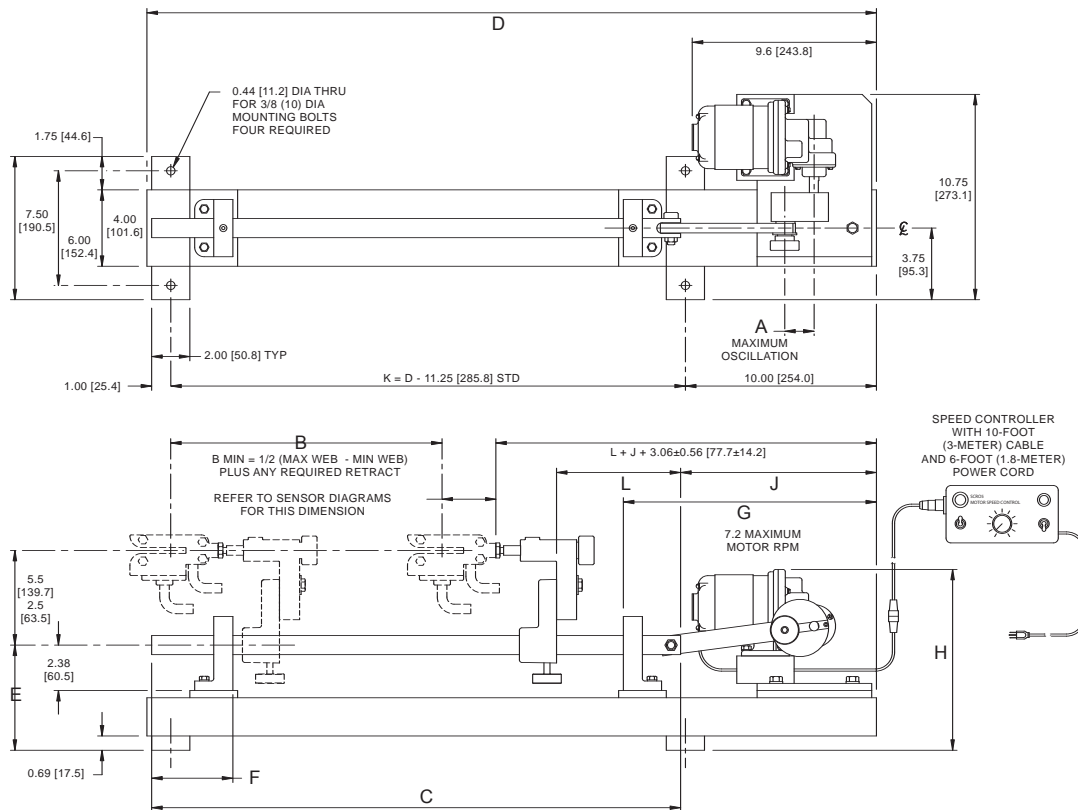
Product Name:
M-23 Sensor Oscillator

Oscillation Range:
0.0" up to 4.0" (102 mm)

Power Requirement:
115 VAC 50/60 Hz

Key Features:

- Complete, independent control of oscillation magnitude—distance and speed.
- Used to wind uniform staggered rolls, avoiding rippled material and telescoping rolls.
- Designed for variable sensor position to accommodate multiple web widths.
- Adaptable to almost any winding or guiding installation.
- Speed control panel installation up to 10 feet (3 meters) away.
- Sensor mounting available for virtually every Fife sensor.
- Custom designed and built to meet your specific requirements.
- Sensors, controls, and actuators are selected based on your guiding system requirements.



NOTES

1. This drawing and table represent applications with a 1" square bar and an M-1935 sensor mounting bracket.
2. Maximum 1" square bar length 'C' is 55.25" (1403 mm). Other configurations are available for longer application requirements.
3. Speed controller enclosure is 5.88" (149 mm) wide x 3.0" (76 mm) tall x 2.38" (60 mm) deep.

Max OSC ± A	C Square Bar Minimum Length	D Mounting Base Minimum Length	E	F	G	H	J	K
1.5" (38 mm)	B + 13.25" (337 mm)	C + 10.50" (267 mm)	5.50" (140 mm)	4.25" (108 mm)	13.25" (337 mm)	9.5" (241 mm)	10.25" (260 mm)	6.50" (165 mm)
1.5" (38 mm)	B + 15.25" (387 mm)	C + 11.00" (279 mm)	6.00" (152 mm)	5.25" (133 mm)	13.75" (349 mm)	10.0" (254 mm)	10.75" (273 mm)	7.50" (191 mm)
1.5" (38 mm)	B + 17.25" (438 mm)	C + 13.50" (343 mm)	7.00" (178 mm)	6.25" (159 mm)	16.25" (413 mm)	10.5" (267 mm)	13.25" (337 mm)	8.50" (216 mm)
1.5" (38 mm)	B + 19.25" (489 mm)	C + 14.00" (356 mm)	7.00" (178 mm)	7.25" (184 mm)	16.75" (425 mm)	11.0" (279 mm)	13.75" (349 mm)	9.50" (241 mm)
1.5" (38 mm)	B + 21.25" (540 mm)	C + 14.50" (368 mm)	8.00" (203 mm)	8.25" (210 mm)	17.25" (438 mm)	11.5" (292 mm)	14.25" (362 mm)	10.50" (267 mm)
1.5" (38 mm)	B + 23.25" (591 mm)	C + 15.00" (381 mm)	9.00" (229 mm)	9.25" (235 mm)	17.75" (451 mm)	12.0" (305 mm)	14.75" (375 mm)	11.50" (292 mm)



Fife Corporation
 222 West Memorial Road
 Oklahoma City, OK 73114, USA
 Phone: 405-755-1600
 Fax: 405-755-8425
 E-mail: fife@fife.com
 Web: www.fife.com

Fife-Tidland GmbH
 Fifestrasse 1, D-65779
 Kelkheim/Ts., Germany
 Phone: (49) 6195-7002-433
 Fax: (49) 6195-7002-933
 E-mail: info@maxcess.de

Maxcess Asia
 300 Orchard Road, No. 15-05
 Orchard Towers
 Singapore 238875
 Phone: (65) 6834-1998
 Fax: (65) 6835-4818
 E-mail: jwongmax@singnet.com.sg

