



A Maxcess International Company

Shifta-Roll Positioning Stands

AG-2 6.00 (15)
AG-16 0.80 (2)



KEY FEATURES

Shifta-Roll Positioning Stands provide accurate edge alignment for Unwind and Rewind guiding. Powered by electromechanical actuators or hydraulic cylinders, these stands were developed to accommodate or replace existing roll stands that would not otherwise lend themselves to automatic guiding applications.

Capable of handling loads up to 5,200 lbs (2359 Kg), these durable stands feature two raceway bases, hardened raceroad supports, and carrier blocks with ball bushings or Teflon bushings. Available with or without uprights, or as raceway base assemblies, the Shifta-Roll Positioning Stand easily adapts to new or existing machinery.

Key Features:

- Reliable, accurate edge alignment for Unwind and Rewind guiding.
- Electromechanical or hydraulic system operation.
- Fast, accurate web positioning.
- Easily adapts to new or existing machinery.
- Durable construction for low maintenance and long-lasting reliability.
- Compatible with all standard Fife sensors and controllers.
- Sensor selection is based on web material and system requirements.
- Optional Servo-Center available to speed setup and threading.
- Custom designed and manufactured according to your specific application requirements.

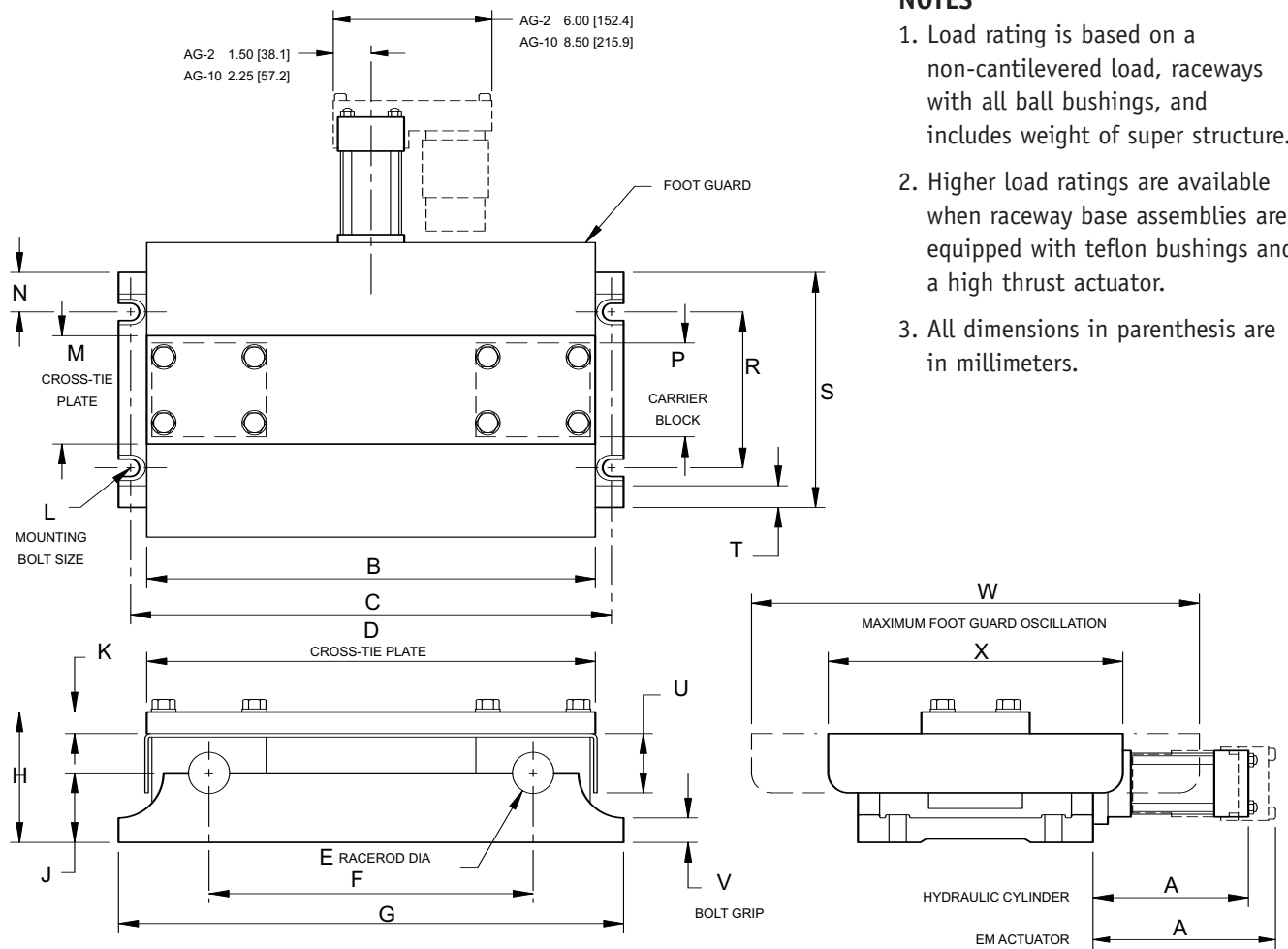
SPECS

General Specifications

Product Name:
Shifta-Roll Positioning Stands

Load Capacity:
Up to 5,200 lbs (2,359 Kg)

Standard Stroke Range:
5" to 9" (126 to 228 mm)



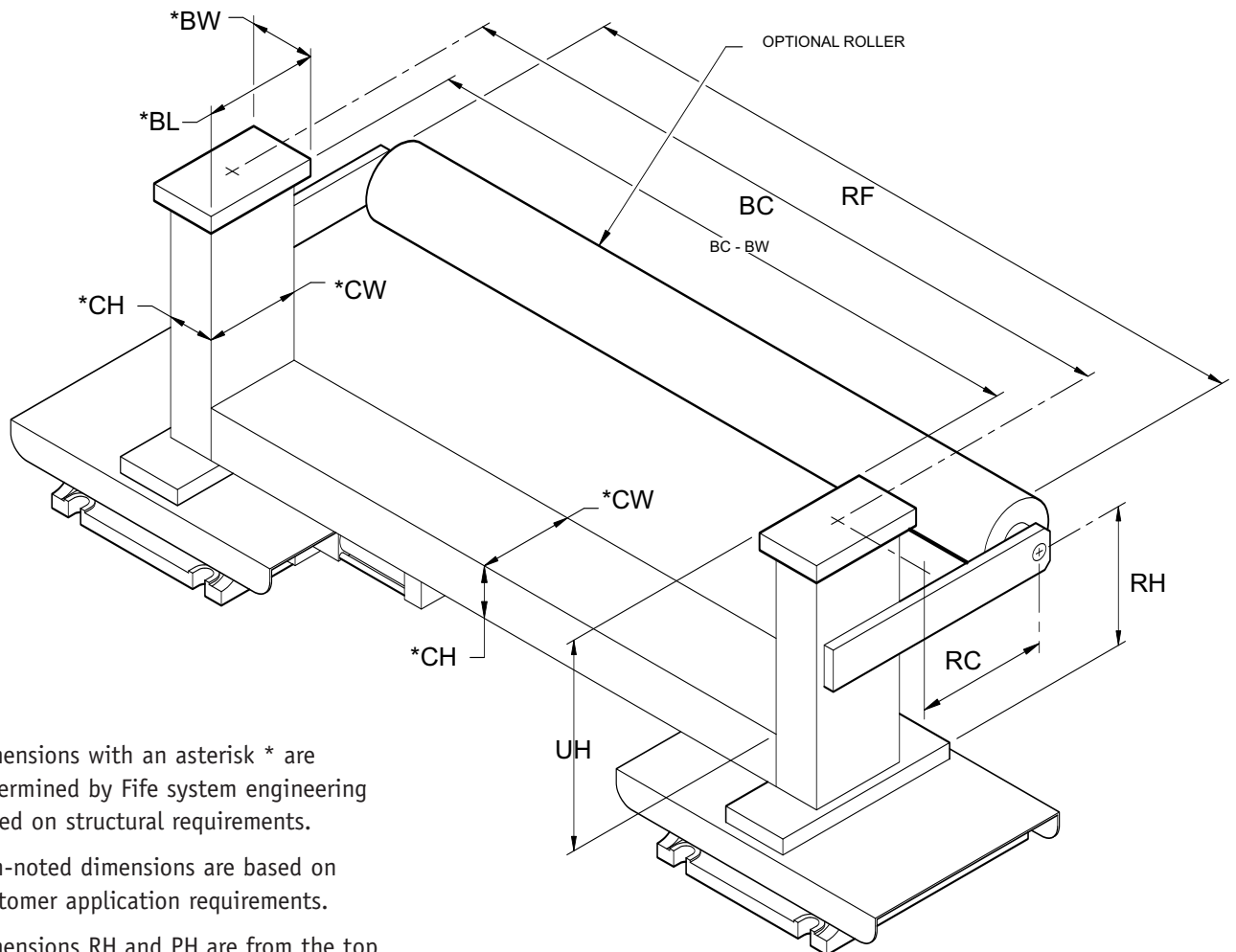
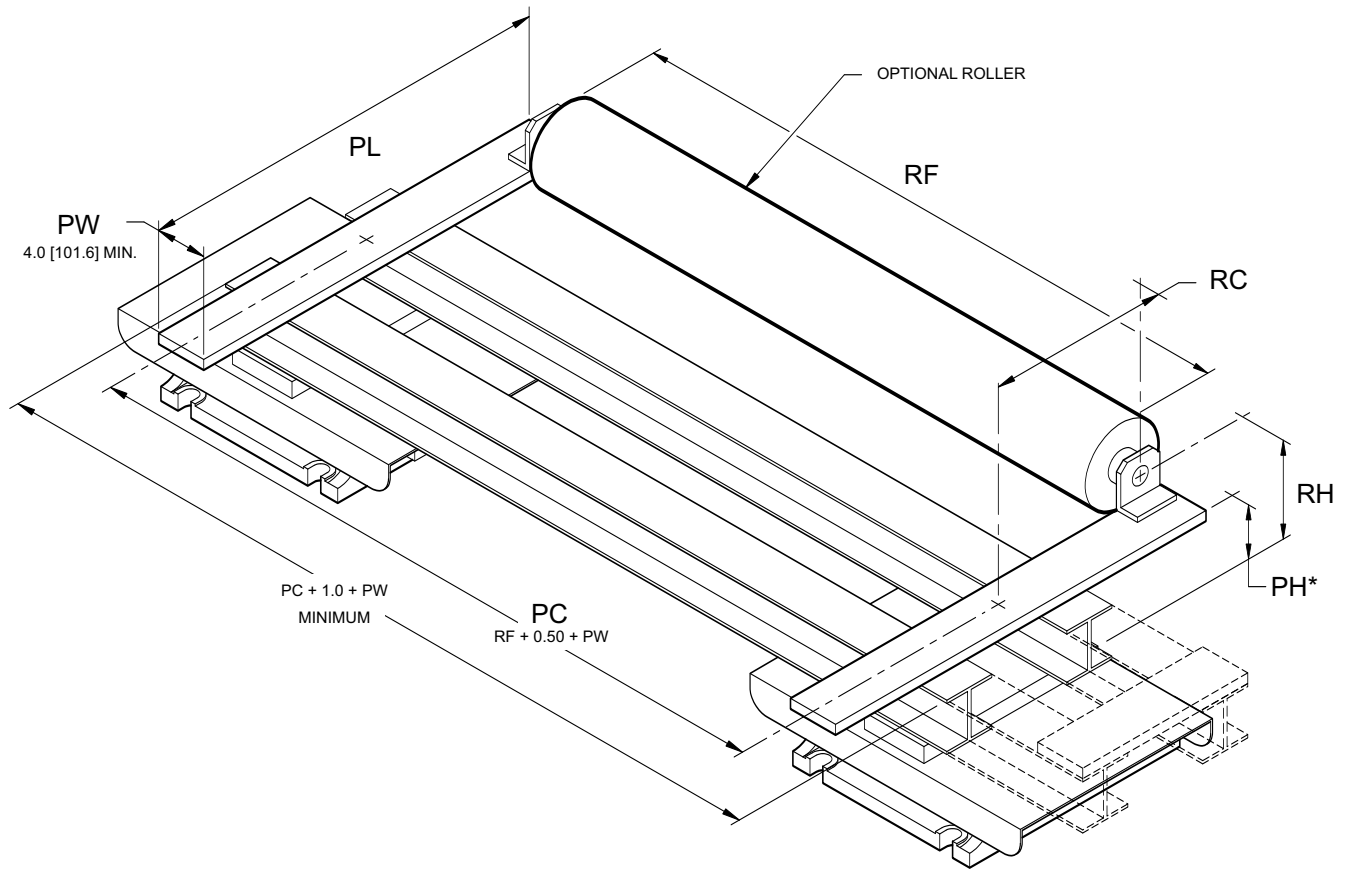
NOTES

1. Load rating is based on a non-cantilevered load, raceways with all ball bushings, and includes weight of super structure.
2. Higher load ratings are available when raceway base assemblies are equipped with teflon bushings and a high thrust actuator.
3. All dimensions in parenthesis are in millimeters.

MODEL NO.	CYLINDER BORE IN. (MM)	ACTUATOR EM ACTUATOR MODEL	ACTUATOR STROKE IN. (MM)	TOTAL LOAD LBS (KG)	HYDRAULIC CYLINDER IN. (MM)	A AG-2-EM ACTUATOR IN. (MM)	A AG-10-EM ACTUATOR IN. (MM)	B IN. (MM)	C IN. (MM)	D IN. (MM)	E IN. (MM)	F IN. (MM)	G IN. (MM)	H IN. (MM)
KWB	1.5 TO 2.5 (38 TO 64)	AG-2 AG-10	5	626 (284)	9.20 (234)	10.06 (256)	13.94 (354)	15.80 (401)	15.75 (400)	15.00 (381)	1.00 (25)	12.00 (305)	17.00 (432)	5.62 (143)
KWA-9	1.5 TO 2.5 (38 TO 64)	AG-2 AG-10	9	625 (284)	13.20 (335)	14.06 (357)	17.94 (456)	15.80 (401)	15.75 (400)	15.00 (381)	1.00 (25)	12.00 (305)	17.00 (432)	5.62 (143)
KHWA	1.5 TO 2.5 (38 TO 64)	AG-2 AG-10	5	1200 (544)	9.30 (236)	10.06 (256)	13.94 (354)	20.00 (508)	21.00 (533)	19.50 (495)	1.50 (38)	15.00 (381)	22.00 (559)	5.75 (146)
KHWA-9	1.5 TO 2.5 (38 TO 64)	AG-2 AG-10	9	1200 (544)	13.30 (338)	14.06 (357)	17.94 (456)	20.00 (508)	21.00 (533)	19.50 (495)	1.50 (38)	15.00 (381)	22.00 (559)	5.75 (146)
KHWA-9-T2	1.5 TO 2.5 (38 TO 64)	AG-10	6	2400 (1089)	10.30 (262)	N/A	14.94 (379)	20.00 (508)	21.00 (533)	19.50 (495)	1.50 (38)	15.00 (381)	22.00 (559)	5.75 (146)
KXWA	2 TO 3.25 (51 TO 83)	AG-10	5	3600 (1633)	10.30 (262)	N/A	13.94 (354)	27.20 (691)	28.88 (734)	26.00 (660)	2.50 (64)	20.00 (508)	30.00 (762)	8.12 (206)
KXWB	2 TO 3.25 (51 TO 83)	AG-10	5	3600 (1633)	11.50 (292)	N/A	13.94 (354)	38.30 (973)	38.63 (981)	37.00 (940)	2.50 (64)	30.00 (762)	40.00 (1016)	8.87 (225)
KYWA	2 TO 3.25 (51 TO 83)	AG-10	5	5200 (2359)	11.50 (292)	N/A	13.94 (354)	38.30 (973)	38.63 (981)	37.00 (940)	3.00 (76)	30.00 (762)	40.00 (1016)	8.87 (225)

TABLE CONT.

MODEL NO.	J IN. (MM)	K IN. (MM)	L IN. (MM)	M IN. (MM)	N IN. (MM)	P IN. (MM)	R IN. (MM)	S IN. (MM)	T IN. (MM)	U IN. (MM)	V IN. (MM)	W IN. (MM)	X IN. (MM)
KWB	2.50 (64)	1.00 (25)	5/8 (16)	4.00 (102)	2.19 (56)	2.50 (64)	6.00 (152)	10.38 (264)	1.00 (25)	1.40 (36)	1.19 (30)	21.0 (533)	16.0 (406)
KWA-9	2.50 (64)	1.00 (25)	5/8 (16)	4.00 (102)	2.13 (54)	2.50 (64)	10.00 (254)	14.25 (362)	1.00 (25)	1.40 (36)	1.19 (30)	32.8 (833)	23.8 (605)
KHWA	3.00 (76)	1.00 (25)	5/8 (16)	6.00 (152)	1.81 (46)	3.75 (95)	8.00 (203)	11.63 (295)	1.00 (25)	2.70 (69)	1.12 (28)	22.0 (559)	17.0 (432)
KHWA-9	3.00 (76)	1.00 (25)	5/8 (16)	6.00 (152)	1.88 (48)	3.75 (95)	12.00 (305)	15.75 (400)	1.00 (25)	2.70 (69)	1.12 (28)	34.3 (871)	25.3 (643)
KHWA-9-T2	3.00 (76)	1.00 (25)	5/8 (16)	6.00 (152)	1.88 (48)	6.75 (171)	12.00 (305)	15.75 (400)	1.00 (25)	2.70 (69)	1.12 (28)	28.3 (719)	22.3 (566)
KXWA	4.50 (114)	1.00 (25)	5/8 (16)	6.00 (152)	2.25 (57)	6.00 (152)	10.00 (254)	14.50 (368)	1.25 (32)	4.10 (104)	1.56 (40)	25.0 (635)	20.0 (508)
KXWB	4.75 (121)	1.00 (25)	7/8 (22)	8.00 (203)	2.75 (70)	7.00 (178)	10.50 (267)	16.00 (406)	1.50 (38)	4.60 (117)	1.44 (37)	26.5 (673)	21.5 (546)
KYWA	4.75 (121)	1.00 (25)	7/8 (22)	8.00 (203)	2.75 (70)	7.00 (178)	10.50 (267)	16.00 (406)	1.50 (38)	4.60 (117)	1.44 (37)	26.5 (673)	21.5 (546)



NOTE

Dimensions with an asterisk * are determined by Fife system engineering based on structural requirements.

Non-noted dimensions are based on customer application requirements.

Dimensions RH and PH are from the top of the cross-tie plate.

Unwind Stands

Stands shift laterally to ensure the correct edge alignment to a predetermined guide point. Depending on the sensor selected, unwind guiding sometimes require a direct mounted or slave idler(s) for proper operation.

Rewind Stands

Roll is positioned to align the edge of the approaching web to the edge of the rewind roll. The sensor chases the edge of the web and laterally positions the stand directly downstream of the incoming web.

SRS-Type Unwind Stands

A pre-engineered stand specifically designed to accommodate large polyethylene rolls used in making bags. With a two-high light-duty roll design, this stand allows either roll to be easily loaded while the other roll is being used. Includes roll shafts and drag brakes.

Complementary Products:

FIFE

Guiding Products & Systems
 - CDP-01 Web Guide Controller
 - LAB-10 Actuator
 Inspection Products & Systems

TIDLAND

Slitting Products & Systems
 Winding Products

MAGPOWR

Tension Control Products
 Torque Control Products



A Maxcess
International
Company

Fife Corporation

222 West Memorial Road
 Oklahoma City, OK 73114, USA
 Phone: 405-755-1600
 Fax: 405-755-8425
 E-mail: fife@fife.com
 Web: www.fife.com

Maxcess Europe

Fifestrasse 1, D-65779
 Kelkheim/Ts., Germany
 Phone: (49) 6195-7002-433
 Fax: (49) 6195-7002-933
 E-mail: info@maxcess.de

Maxcess Asia

300 Orchard Road, No. 15-05
 Orchard Towers
 Singapore 238875
 Phone: (65) 6834-1998
 Fax: (65) 6835-4818
 E-mail: jwongmax@singnet.com.sg



MAXCESS INTERNATIONAL COMPANIES



GUIDING · INSPECTION
 1-800-639-3433
 (405) 755-1600



TENSION CONTROL
 1-800-MAGPOWR
 (405) 755-1600



SLITTING · WINDING
 1-800-426-1000
 (360) 834-2345