



A Maxcess International Company

# Video Inspection Signal Input Devices



**F**or use with Fife's InPrint™ Video Inspection Systems, these signal input devices provide simple, accurate operation. Each device provides a precise one-to-one relationship between the input signal received by the system and the print cylinder circumference, delivering overall system reliability.

- **KT-5 Contrast Scanner** – For optical pick-up applications where consistent contrasting patterns repeat in direct relation to the print cylinder circumference. The KT-5 allows the user to define input configurations with very few process line adaptations.
- **HDI-1 Proximity Sensors** – Designed specifically for intrinsically safe installations, these devices are best applied to installations where the drive gear teeth or drive shaft of the process line is accessible for sensor detection and installation.
- **Incremental Optical Encoder** – For applications where the drive gear or shaft are not accessible for proximity sensor installation, an optical encoder can be fitted to the process line with the appropriate gearing provided by the customer.

# KEY FEATURES

## Key Features:

- Proximity sensor, optical pickup, or encoder-type input
- Provides a dedicated, synchronized link to ensure system accuracy and reliability
- Hard-lock image stability
- Configured to meet your system requirements
- All cables and connectors are provided for easy installation and hookup

# SPECS

## General Specifications

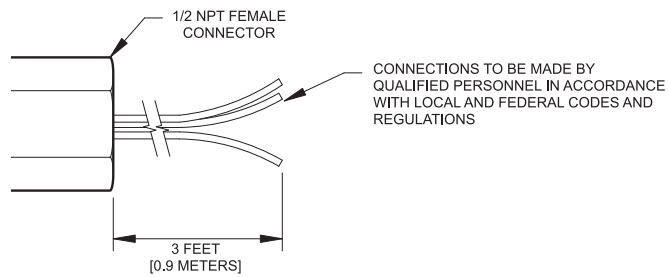
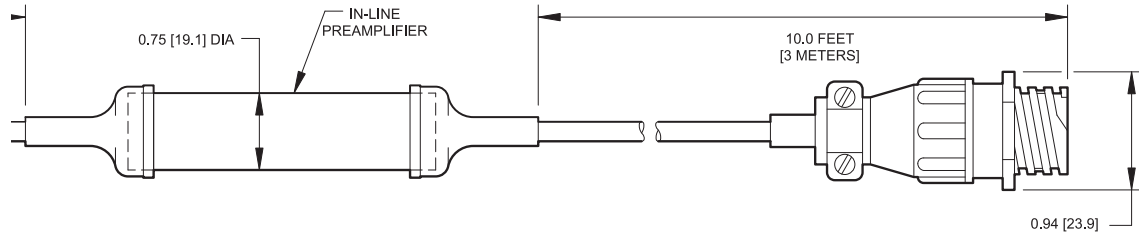
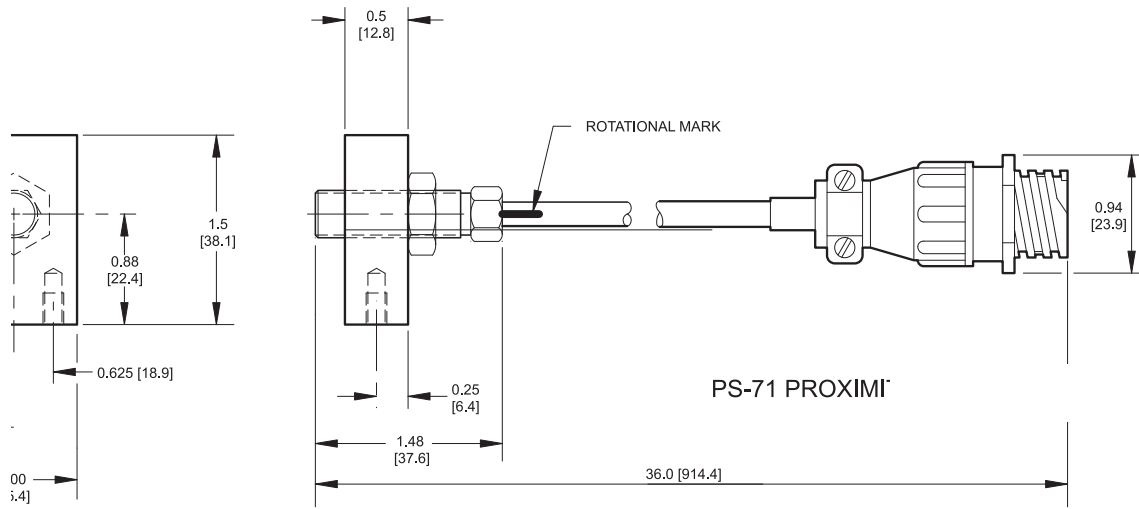
### Product Name:

KT-5 Contrast Scanner  
HDI-1 Proximity Sensor  
Incremental Optical Encoder

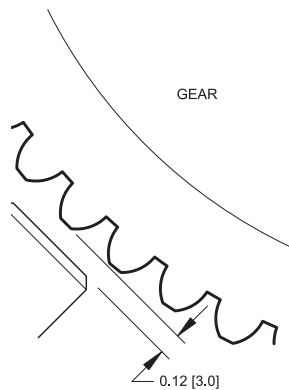
### Signal Pulse:

**KT-5:** 1 pulse per pin/flat detected  
**HDI-1:** 1 pulse per pin/flat detected  
**Optical Encoder:** 1,000 pulses per revolution

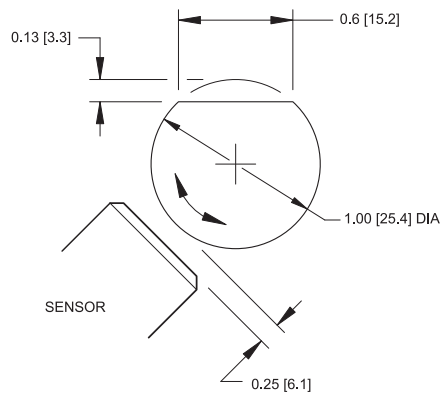
### HDI-1 PROXIMITY SENSOR



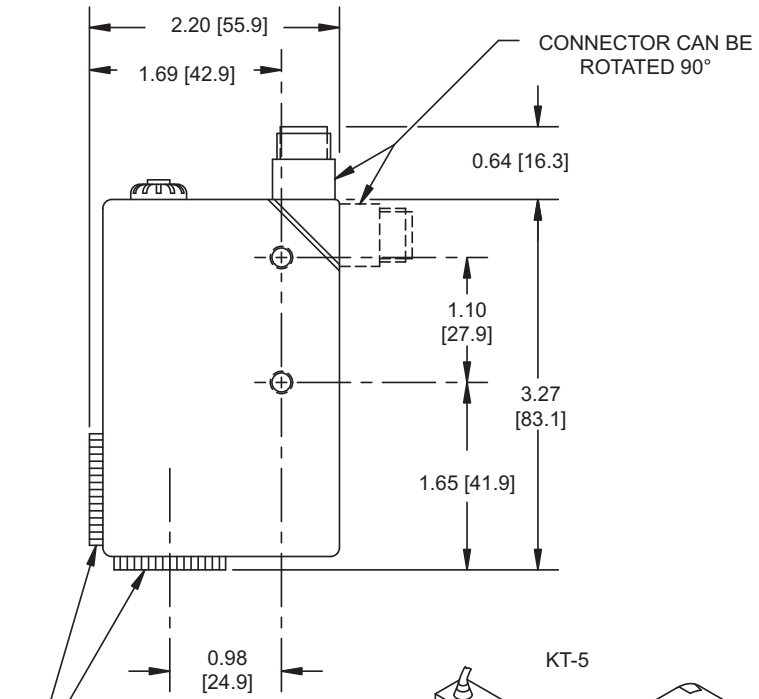
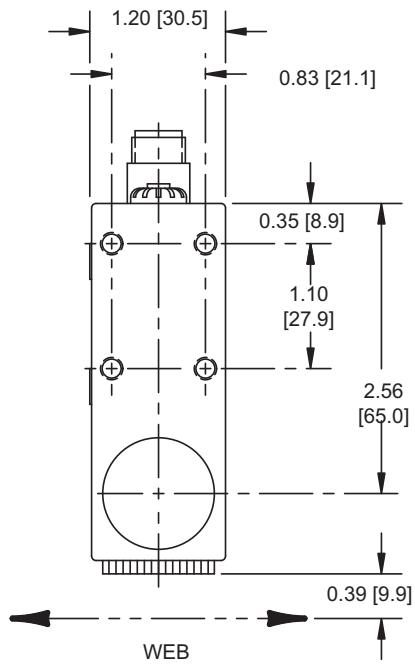
### HDI-1 GEAR PULSE INSTALLATION



### HDI-1 REV PULSE INSTALLATION

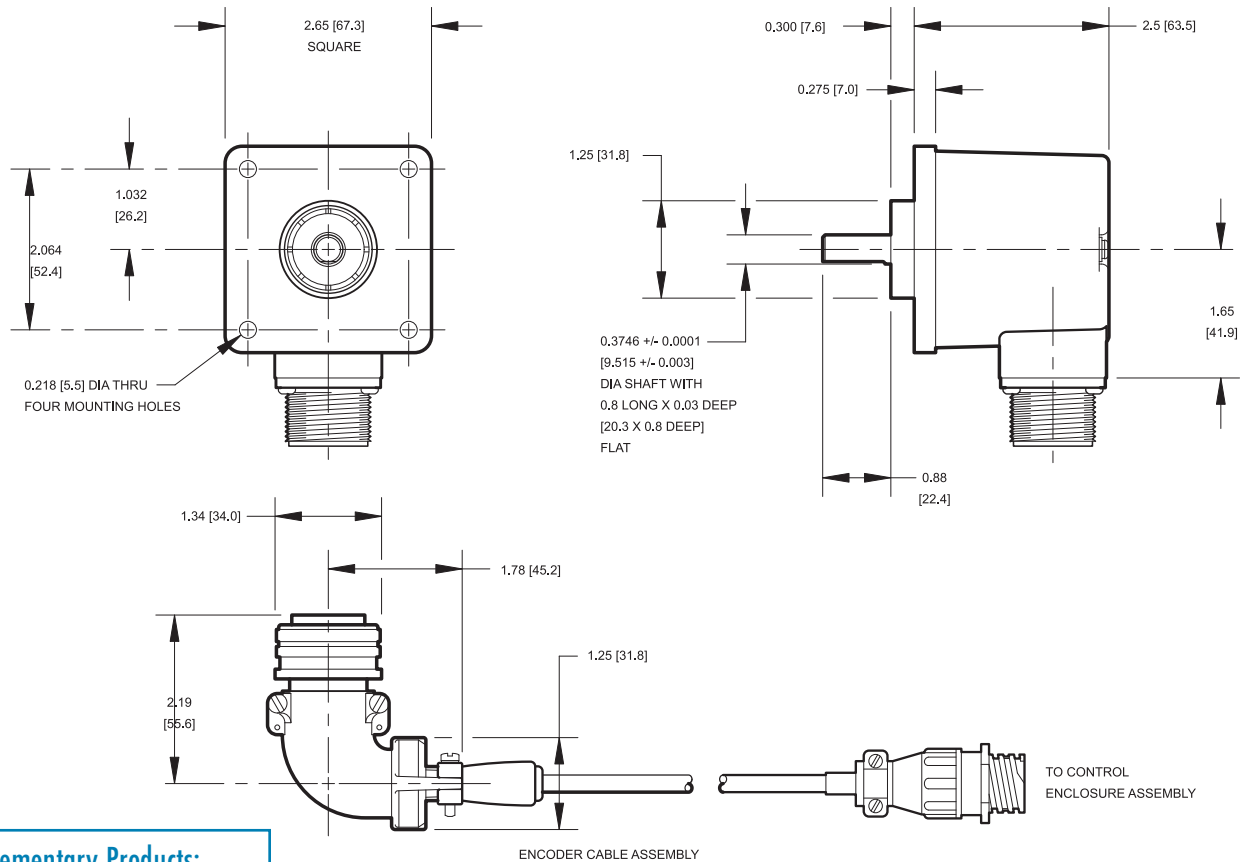


# KT-5 CONTRAST SCANNER



(Dimensions shown in parenthesis are in millimeters.)

### OPTICAL ENCODER



ALL DIMENSIONS IN BRACKETS ARE IN MILLIMETERS

#### Complementary Products:

##### FIFE

Guiding Products & Systems  
 Web Inspection Systems  
 InPrint Video Web Inspection

##### TIDLAND

Slitting Products & Systems  
 Winding Products

##### MAGPOWR

Tension Control Products  
 Torque Control Products



A Maxcess International Company

#### Fife Corporation

222 West Memorial Road  
 Oklahoma City, OK 73114, USA  
 Phone: 405-755-1600  
 Fax: 405-755-8425  
 E-mail: fife@fife.com  
 Web: www.fife.com

#### Maxcess Europe

Fifestrasse 1, D-65779  
 Kelkheim/Ts., Germany  
 Phone: (49) 6195-7002-0  
 Fax: (49) 6195-7002-933  
 E-mail: info@maxcess.eu

#### Maxcess Asia

300 Orchard Road, No. 15-05  
 Orchard Towers  
 Singapore 238875  
 Phone: (65) 6834-1998  
 Fax: (65) 6835-4818  
 E-mail: asia@maxcessintl.com



MAXCESS INTERNATIONAL COMPANIES



GUIDING · INSPECTION

1-800-639-3433  
 (405) 755-1600



TENSION CONTROL

1-800-MAGPOWR  
 (405) 755-1600



SLITTING · WINDING

1-800-426-1000  
 (360) 834-2345