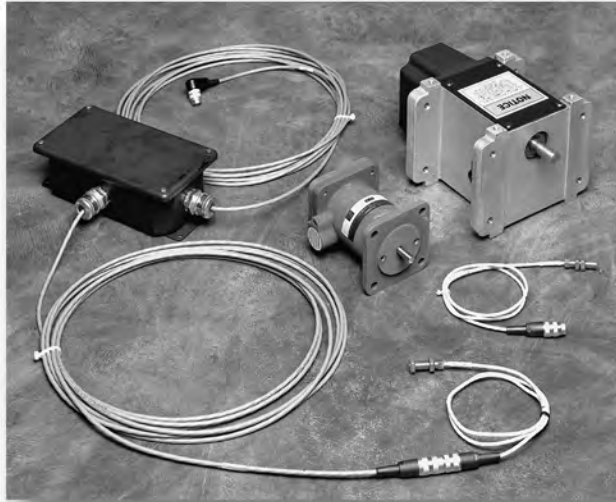




A Maxcess
International
Company

Visual Inspection Signal Input Devices



Whether your application lends itself to encoder-type, digital input or proximity sensor-type, single index pulse input, Fife offers a wide variety of devices to meet your needs. For use with our Scan-A-Web® Visual Inspection System, these signal input devices provide a dedicated, synchronized link to your process line, delivering hard-lock image stability and ensuring overall system reliability.

- **CT-32/CT-30X Command Transducers** – These encoder-type signal input devices provide great flexibility in installation locations. Both versions are designed to generate 200 signal pulses for each complete encoder shaft revolution. The CT-30X is UL-Listed for NEMA 7, Class I, Group D, Divisions I installations.

- **PS-61/PS-61X Proximity Sensors** – Best for flexo-type presses, these signal input devices provide flexibility in job configuration and image stability. Both versions produce one signal pulse for each pin (gear tooth) or flat detected. The PS-61X is specifically designed for intrinsically safe installations.

SPECS

General Specifications

Product Name:

Visual Inspection Signal Input Devices

Minimum Web Speed:

2.7 FPM

Signal Pulse:

CT-32/CT-30X: 200 pulses per revolution

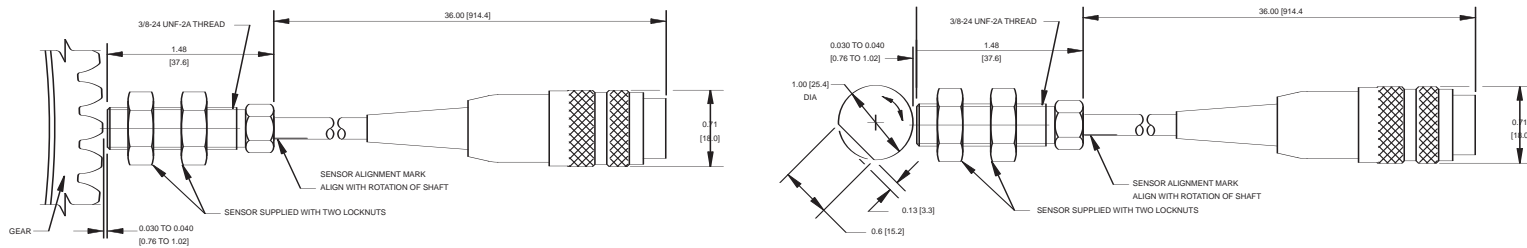
PS-61/PS-61X: 1 pulse per pin/flat detected

Key Features:

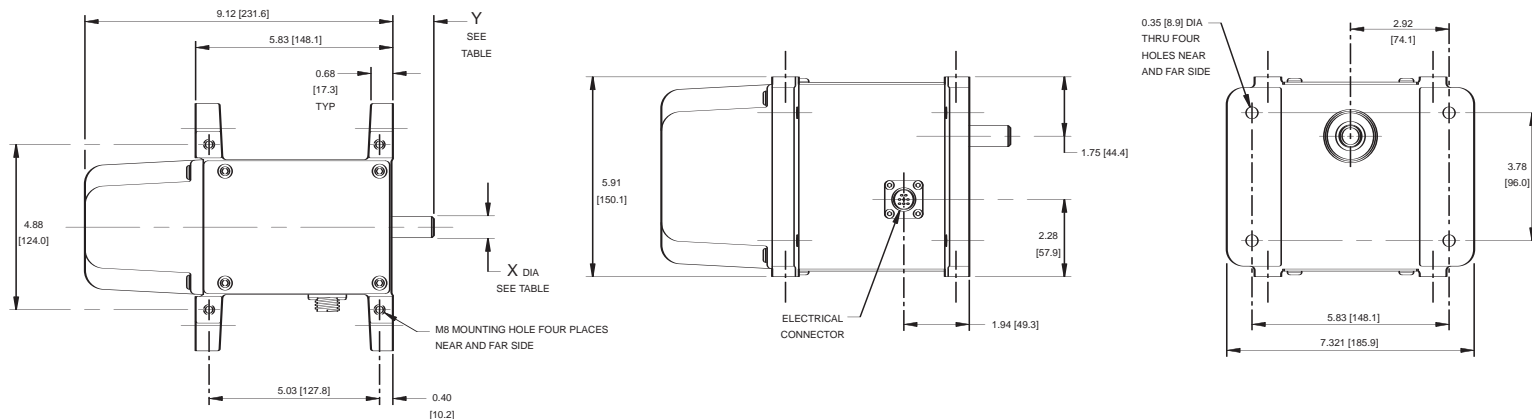
- Encoder-type or proximity sensor-type signal input.
- Provides a dedicated, synchronized link to ensure system accuracy and reliability.
- Hard-lock image stability.
- For use with Fife's Scan-A-Web Visual Inspection System.
- Configured to meet your system requirements.

KEY FEATURES

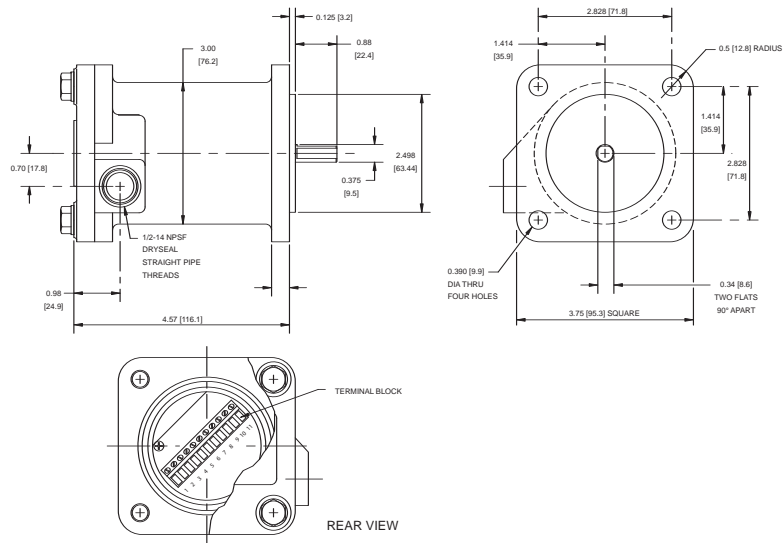
PS-61(X) PROXIMITY SENSOR



CT-32



CT-30X COMMAND TRANSDUCER



Complementary Products:

FIFE

- Guiding Products & Systems
 - Polaris® Web Guide Controller
 - Offset Pivot Guides
 - Network Communication

TIDLAND

- Slitting Products & Systems
- Winding Products

MAGPOWR

- Tension Control Products
- Torque Control Products



A Maxcess International Company

Fife Corporation

222 West Memorial Road
Oklahoma City, OK 73114, USA
Phone: 405-755-1600
Fax: 405-755-8425
E-mail: fife@fife.com
Web: www.fife.com

Fife-Tidland GmbH

Fifestrasse 1, D-65779
Kelkheim/Ts., Germany
Phone: (49) 6195-7002-0
Fax: (49) 6195-7002-933
E-mail: info@maxcess.de

Maxcess Asia

300 Orchard Road, No. 15-05
Orchard Towers
Singapore 238875
Phone: (65) 6834-1998
Fax: (65) 6835-4818
E-mail: jwongmax@singnet.com.sg



MAXCESS INTERNATIONAL COMPANIES



GUIDING · INSPECTION
1-800-639-3433
(405) 755-1600



TENSION CONTROL
1-800-MAGPOWR
(405) 755-1600



SLITTING · WINDING
1-800-426-1000
(360) 834-2345